

WATER PUMP

WB20XT
WB30XT

PARTS CATALOGUE

1



WB20XT



WB30XT

FOREWORD INDEX

1

ENGINE GROUP

2

FRAME GROUP

3

PART NUMBER INDEX

4

PART NAME INDEX

5

Instruction for use of parts catalogue

- **This parts catalogue was prepared based on the latest information available as of November 10, 2002.**
 - See the parts catalogue news for any revision that is made after November 10, 2002.
- **Always specify the part number when ordering a part.**
 - Check the model, type, serial numbers, color, maker, and the size as needed before ordering a part.
 - Note that the illustrations (part drawings) can differ from the actual parts in shape. They are given just to help you to refer to the parts.
- **When modifications or additions to this parts catalogue are made, a revised edition will be issued at an appropriate time, with successively progressing revision numbers on the cover. We recommend obtaining such revisions in order to keep your parts catalogue up-to-date at all times. To check whether a parts catalogue revision has been issued, please contact your Honda distributor.**

Initial version issue date **November 10, 2002**
Honda Motor Co., Ltd.

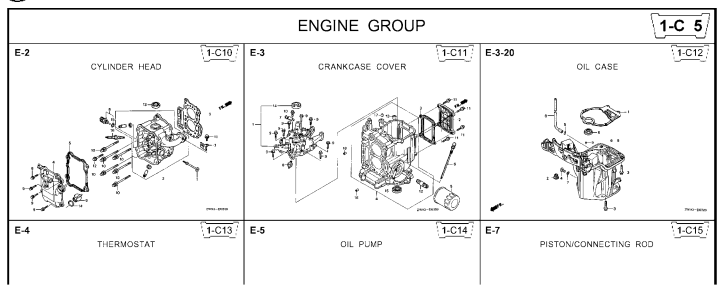
CONTENTS

	Page	Address No.	
● How to refer to the part information	2	B 2	1
● Part catalogue structure	3	B 3	
● When the parts were revised	4	B 4	
● Abbreviations used in the parts catalogue.....	4	B 4	
● How to check the part block and serial numbers.....	5	B 5	
● Models, parts catalogue codes and applicable serial numbers	6	B 6	
● Features of each type.....	7	B 7	
● Fuel hose, general purpose hoses and vinyl hose.....	8	B 8	
● How to use the flat rate time (F.R.T.)	9	B 9	
● Illustrated index	11	B11	
● ENGINE GROUP.....	14	C 1	2
● FRAME GROUP.....	32	E 1	3
● PART NO. INDEX.....	36	F 1	4
● PART NAME INDEX.....	38	G 1	5



How to refer to the part information

A Reference with "Illustrated index"



B Reference with "Part number index"

PART NO. INDEX

Part Number	Address	Page	Ref.	Part Number	Address	Page
06000				15212-ZW9-000	1-C14	3C
06316-ZW9-000	1-G9	88	1	15220-ZW9-003	1-C14	3C
11000				15332-ZW9-000	1-E8	55
11300-ZW9-405	1-C11	27	1	15332-ZW9-A30	1-E11	5E
11300-ZW9-406	1-C11	27	1	15400-PFB-004	1-C11	27
11340-ZW9-000	1-C11	27	2	15422-ZW9-000	1-C14	3C
11342-ZW9-000	1-C11	27	3	15473-881-000	1-C14	3C
11381-ZW9-003	1-C12	28	1	15474-ZW9-000	1-C14	3C
				15611-921-000	1-C10	2E
				15655-ZW9-000	1-C11	27
				16000		
12000				16010-ZV4-005	1-D4	3E
12000-ZW9-405ZA	1-C11	27	4	16011-ZV4-005	1-D4	3E
12155-ZV4-A00	1-C13	29	1	16013-ZW9-003	1-D4	3E
12166-ZW9-000	1-C10	26	1	16016-ZW9-003	1-D4	3E
12209-GB4-681	1-C16	32	1	16016-ZW9-721	1-D4	3E
12210-ZW9-405ZA	1-C10	26	2	16023-ZW9-003	1-D4	3E
12216-ZE2-300	1-E8	55	1	16024-ZV4-650	1-D4	3E
	1-E11	58	1	16028-ZV4-650	1-D4	3E

C Reference with "Part name index"

PART NAME INDEX

Part name	Address	Page	Ref.
[A]			
ABSORBER, FUEL	1-E15	62	5
ARMATURE COMP.	1-D11	43	7
ARM COMP., LINK JOINT	1-G6	85	18
ARM COMP., SHIFT LINK	1-G6	85	14
ARM COMP., TILT	1-F15	79	20
ARM, FUEL PUMP ROCKER	1-C16	32	4
ARM, REVERSE LOCK	1-F15	79	18
ARM, SHIFT LINK	1-F11	74	7
ARM, STOPPER	1-D1	33	12
ARM, THROTTLE REMOTE	1-F11	74	6
ARM, VALVE ROCKER	1-C16	32	3
[B]			
BAG, TOOL, 160MM	1-G5	84	10
BAND	1-G6	86	37
BAND B1, WIRE	1-F6	69	1
BAND, CORD	1-F3	67	18
BAND, TUBE CLIP, 11MM	1-E15	63	20
BAND, TUBE CLIP, 12.5MM	1-E15	63	19

Address No. 1-C10

Block No. E-2 CYLINDER HEAD

Ref No.

Ref. No.	Part No.	Description	Reqd. QTY						Serial No.	Parts catalogue code
			BF 9901	BFP 9901	BF 1001	BFP 1001	BF 10B1	BFP 10B1		
1	12166-ZW9-000	STOPPER, ENGINE SIDE	2	2	2	2	2			
2	12210-ZW9-000ZA	HEAD COMP., CYLINDER	1	1	1	1	1			
3	12251-ZW9-003	GASKET, CYLINDER HEAD	1	1	1	1	1			
4	12310-ZW9-000	COVER COMP., HEAD	1	1	1	1	1			
5	12312-ZW9-000	PACKINGS, HEAD COVER	1	1	1	1	1			
6	15611-921-000	CAP, OIL (NO GAUGE)	1	1	1	1	1			
7	16617-ZW9-000	HOLDER, CABLE	1	1	1	1	1	SC,SG		
	16617-ZW9-010		1	1	1	1	1	1001800	LHC,LHD	
			1	1	1	1	1	1001801	LHC,LHD	
8	35673-ZW5-003	SENSOR ASSY., WATER	1	1	1	1	1			
9	90003-ZW9-000	BOLT, FLANGE, 6X22	4	4	4	4	4			
10	90007-ZW9-003	BOLT, FLANGE, 8X83	6	6	6	6	6			
11	90011-ZW9-000	BOLT, FLANGE, 6X14(CT200)	1	1	1	1	1			
12	90020-ZW9-000	BOLT, FLANGE, 8X40	2	2	2	2	2			
13	91002-K19-003	OIL SEAL, 20X32X6	1	1	1	1	1			
14	91301-805-000	O-RING, 26X2.7	1	1	1	1	1			
15	91307-PK2-005	O-RING, 9.5X1.5(HONDA KIKAKI)	1	1	1	1	1			
16	98059-55916	PLUG, SPARK (CR5EH-9)	2	2	2	2	2			
	98059-55926	PLUG, SPARK (U16FER9)	2	2	2	2	2			

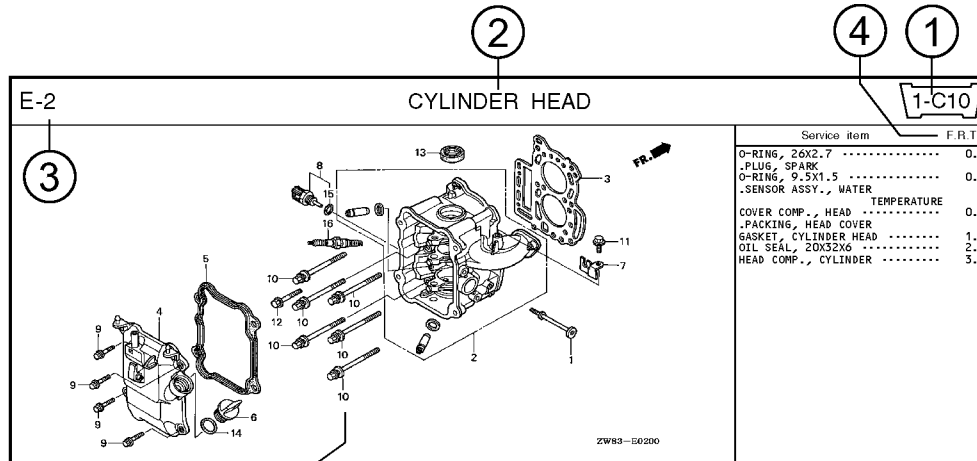
Service item F.R.T.

- O-RING, 26X2.7 0.1
- PLUG, SPARK 0.2
- O-RING, 9.5X1.5 0.2
- SENSOR ASSY., WATER TEMPERATURE 0.3
- COVER COMP., HEAD 0.3
- PACKING, HEAD COVER 1.8
- GASKET, CYLINDER HEAD 2.4
- OIL SEAL, 20X32X6 2.4
- HEAD COMP., CYLINDER 3.1

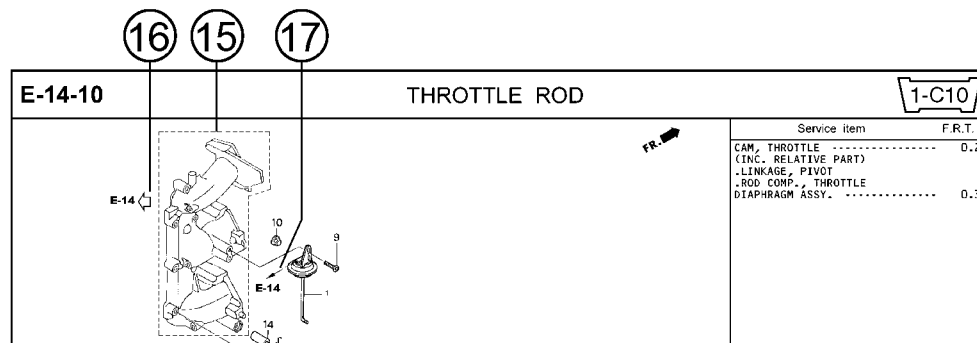
2000.09.20 E

Page No.

Part catalogue structure



Ref. No.	Part No.	Description	Reqd. QTY						Serial No.	Parts catalogue code
			BF 9/9D1	BFP 9/9D1	BF 10D1	BFP 10D1	BF 10B1	BFP 10B1		
1	12166-zw9-000	STOPPER, ENGINE SIDE	2	2	2	2	2			
2	12210-zw9-000ZA	HEAD COMP., CYLINDER *NHS*	1	1	1	1	1			
3	12251-zw9-003	GASKET, CYLINDER HEAD	1	1	1	1	1			
4	12310-zw9-000	COVER COMP., HEAD	1	1	1	1	1			
5	12312-zw9-000	PACKING, HEAD COVER	1	1	1	1	1			
6	15611-921-000	CAP, OIL (NO GAUGE)	1	1	1	1	1			
7	16617-zw9-000	HOLDER, CABLE	1	1	1	1	1	SC,SG		
	16617-zw9-010		1	1	1	1	1	1001800	LHC,LHD	



① Address number

- Address No. is provided (in place of the page No.) to help you refer to the part with the part No. or part name.

② Block title ③ Block number

④ Service item/Flat rate time

⑤ Reference number

- Title number marked with the parenthesis or parentheses indicates that it continues from the previous page.

⑥ Part number ⑦ Honda color code

⑧ Description

⑨ Assemblies

- Sections framed with broken lines in the exploded view drawings are available as complete assemblies. (Their individual parts can also be obtained.)

⑩ Color description

⑪ Note

- Notes are shown with the parentheses in the part name column.

⑫ Required quantity

- Required QTY shown in the parenthesis or parentheses indicates the optional part.
- Required QTY marked with "N" Indicates the optional part that should be selected as needed.
- Required QTY indicates the number of the part used in the block.

⑬ Serial number

⑭ Type

- When the type column is blank, it indicates that the part is applicable to all types.
- As the type of the actual unit may differ from the "parts catalogue, type" please refer to "Models, types and applicable serial numbers" for confirmation.

⑮

- Parts enclosed within a dotted line are covered in a different block.

⑯

- A hollow arrow indicates the block No. for the parts enclosed within a dotted line .

⑰

- A solid arrow indicates the block No. the part in question is connected to.

When the parts were revised

Abbreviations used in the parts catalogue

1



Be sure to check the serial number!!



Ref. No.	Part No.	Description	Reqd. QTY						Serial No.
			BF 99D1	BFP 99D1	BF 10D1	BFP 10D1	BF 10B1	BFP 10B1	
1	12166-ZW9-000	STOPPER, ENGINE SIDE	2	2	2	2	2	2	
2	12210-ZW9-000ZA	HEAD COMP., CYLINDER *NH8*.....DARK GRAY	1	1	1	1	1	1	
3	12251-ZW9-003	GASKET, CYLINDER HEAD	1	1	1	1	1	1	
4	12310-ZW9-000	COVER COMP., HEAD	1	1	1	1	1	1	
5	12312-ZW9-000	PACKING, HEAD COVER	1	1	1	1	1	1	
6	15611-921-000	CAP, OIL (NO GAUGE)	1	1	1	1	1	1	
7	16617-ZW9-000	HOLDER, CABLE	1	1	1	1	1	1	
	16617-ZW9-010	1	1	1	1	1	1	

The number has been used from the initial model without revision.

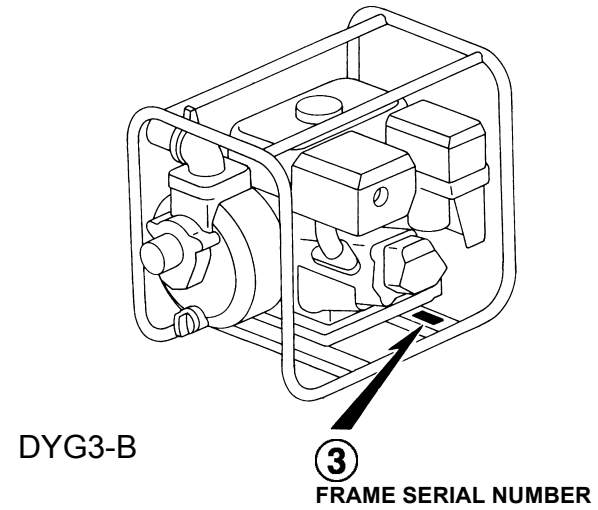
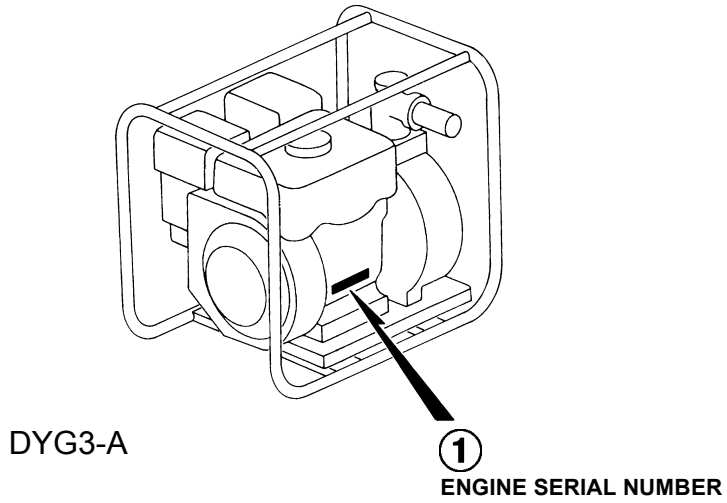
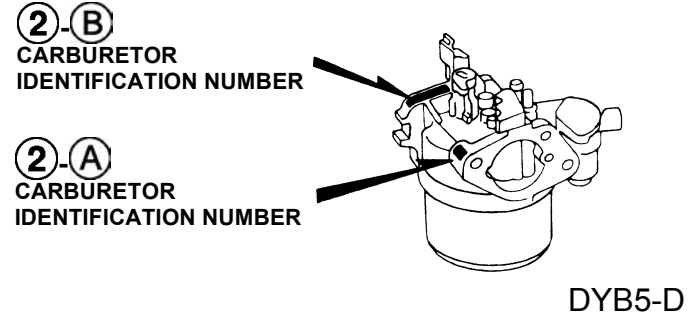
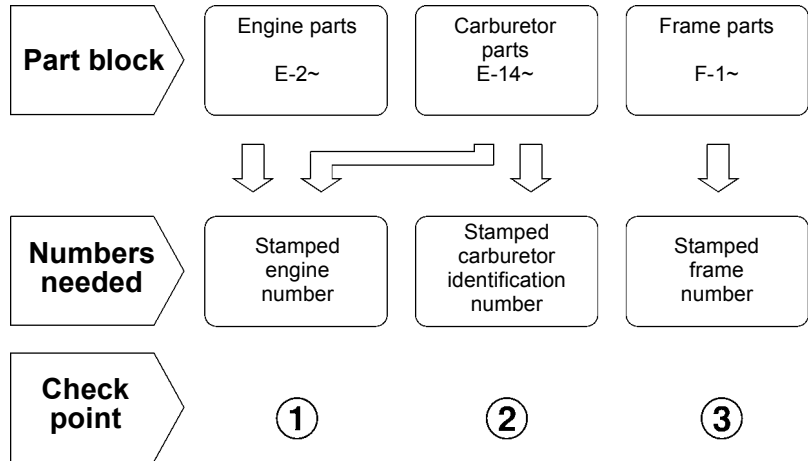
When shown at the left side, it is applicable to the models of No.1001801 and the subsequent numbers.

When shown at the right side, it is applicable to the models up to No.1001800.

The following abbreviations are used in the parts name column.

- A Ampere
- A.C. Alternating current
- ASSY. Assembly
- AT. Automatic transmission
- C.D.I. Capacitive discharge ignition
- COMP. ... Complete
- D.C. Direct current
- EX. Exhaust
- G.F.C.I ... Ground fault circuit interruptor
- HEX. Hexagonal
- H.S.T. Hydrostatic transmission
- FR.Front
- IN.Inlet
- L (100L) .Link (100 Links)
- L.Left
- MMMillimeter
- MT.Manual Transmission
- P.T.O.Power take off
- R.Right
- RR.Rear
- STD.Standard
- T (22T) ...Tooth (22 Teeth)
- VVolt
- WWatt

How to check the part block and serial numbers



Models, parts catalogue codes and applicable serial numbers

1

- Models, parts catalogue codes and applicable serial Nos. given in this parts catalogue can be identified as follows.

Model	Type	Parts catalogue type	Engine		Applicable engine serial No.	Applicable frame serial No.	Applicable carburetor identification No.
			Model	Type			
WB20XT	DR	DR	GX120T1	BY1	GCAAT-1000001~	WABT-1000001~	BE61J A
	DRX	DRX		AY1			
	DRXU	DRXU		BX1			
	TR	TR		AY2			
WB30XT	DR	DR	GX160T1	BY1	GCABT-1000001~	WACT-1000001~	BE66G A
	DRX	DRX		AY1			
	DRXU	DRXU		BX1			
	TR	TR		AY2			

* Of carburetor identification numbers, only the portions underlined in the example below are used for registration.

BE 61JA KC †
 (A) (B)

Features of each type

- See the following table for the features of each type.

Specifications		Model	WB20XT				WB30XT			
		Type	DR	DRX	DRXU	TR	DR	DRX	DRXU	TR
Oil alert				•	•			•	•	
Hose coupling	Ø48.5		•	•	•	•				
	Ø 76						•	•	•	•

Fuel hose, general purpose hoses and vinyl hose

1

- The standard part fuel hose, general purpose hose and vinyl hose may be substituted by the coiled bulk part.
- When ordering the standard part fuel hose, general purpose hose and vinyl hose use the bulk part number written in the parts catalog in brackets () underneath the part name.
- When exchanging the hose, cut and use at the specified length as mentioned in the part name.
(For the method of cutting the bulk part, and method of filling out orders etc., please refer to the instructions issued with the bulk part.)

Bulk part number of fuel hose, general purpose hose and vinyl hose.

Example: 9 5 0 0 1 - 7 5 0 0 1 - 5 0 M

Bulk part number:

Refers to the bulk part.

Marking code (fuel hose and general purpose hose)

Change code (Vinyl hose)

Indicates number mark or change sequence, however, the code for the bulk part must be strictly 0 (zero).

Types of code:

- | | | | | | |
|-------------|--|----------------|--|--------------|---|
| • Fuel hose | 2: Red outside braid
(3 mm inside dia. only) | • General hose | 1: Ash gray
2: Ash gray
3: Black
5: Black | • Vinyl hose | 1: Clear
2: Black
3: Light red
6: Light red
7: Pale black |
| | 5: Black inside braid | | | | |
| | 3: Red (3 mm inside dia. only) | | | | |
| | 4: Ash gray with red stripe
(3 mm inside dia. only) | | | | |
| | 6: Black | | | | |

Lengths:

- 001: 1 m (standard)
003: 3 m
008: 8 m } Application or specification of some parts is not settled.

I.D code: (fuel hose and general purpose hose)

- | | | | | |
|------------|--------------------|--------------------|-----------------------------|-----------------------------|
| 30: 3.0 mm | 50: 5.0 mm | 70: 7.0 mm | 11: 11 mm | 12: 12 (outside dia. 17) mm |
| 35: 3.5 mm | 55: 5.3 mm, 5.5 mm | 75: 7.3 mm, 7.5 mm | 91: 12 (outside dia. 15) mm | 14: 14 mm |
| 45: 4.5 mm | 65: 6.5 mm | 80: 8.0 mm | 92: 12 (outside dia. 16) mm | 17: 17 mm |

ID./OD. code: (vinyl hose)

- | | | | | |
|-------------------------|--------------------------|---------------------------|---------------------------|---------------------------|
| 01: ID. 2.9, OD. 6.8 mm | 12: ID. 5.0, OD. 7.0 mm | 21: ID. 8.0, OD. 9.0 mm | 37: ID. 11.0, OD. 15.0 mm | 50: ID. 16.0, OD. 19.0 mm |
| 03: ID. 3.0, OD. 6.0 mm | 10: ID. 5.0, OD. 8.0 mm | 23: ID. 8.0, OD. 12.0 mm | 38: ID. 12.0, OD. 13.0 mm | 55: ID. 17.5, OD. 20.5 mm |
| 05: ID. 3.5, OD. 6.5 mm | 11: ID. 5.0, OD. 9.0 mm | 25: ID. 9.0, OD. 11.0 mm | 39: ID. 12.0, OD. 14.0 mm | 60: ID. 22.0, OD. 27.0 mm |
| 07: ID. 4.0, OD. 7.0 mm | 14: ID. 6.0, OD. 9.0 mm | 27: ID. 9.0, OD. 13.0 mm | 40: ID. 12.0, OD. 16.0 mm | |
| 08: ID. 4.5, OD. 6.5 mm | 17: ID. 7.0, OD. 9.0 mm | 33: ID. 10.0, OD. 14.0 mm | 43: ID. 13.0, OD. 15.0 mm | |
| 09: ID. 4.5, OD. 8.0 mm | 19: ID. 7.0, OD. 11.0 mm | 36: ID. 11.0, OD. 13.0 mm | 45: ID. 14.0, OD. 18.0 mm | |

Hose type:

- 1: Fuel hose
3: Vinyl hose
5: General hose

⊙ **CAUTION: It is DANGEROUS to confuse the fuel hose with the general purpose hose or vinyl hose.**

Never use a general purpose hose or vinyl hose in place of a fuel hose or vice versa. Always use the correct bulk part in the parts catalogue, according to the service manual or the instructions issued with the bulk part.

How to use the flat rate time (F.R.T.)

This F.R.T. (Flat Rate Time) is used to determine the standard labor time allowed for replacement of parts covered by the warranty during the period the warranty is in effect. The F.R.T. for those parts which are not listed herein should be determined from the operation closely related to the replacement of that part.

1. The F.R.T. is based on the following servicing conditions

- a. A liberal allowance is added to the net servicing time.
- b. Standard times specified are based on the condition that the necessary servicing tools listed in the service manual which describes the Honda service policy are available close at hand and the work performed by a mechanic with normal skill.
- c. Time required for inspection and operational test following the servicing is included in the F.R.T.
- d. The F.R.T. for “•” marked parts are same as the F.R.T. for the representative part above.
- e. The F.R.T. shown with (*) includes engine removal and installation.

2. Method of computing

The job times are listed in tenth of an hour to simplify computation.

(Example) 0.3 = 18 minutes
5.6 = 5 hours and 36 minutes

CONVERSION CHART			
Hours	Minutes	Hours	Minutes
0.1	6	0.6	36
0.2	12	0.7	42
0.3	18	0.8	48
0.4	24	0.9	54
0.5	30	1.0	60

3. Computing the F.R.T.

The following are only examples and do not reflect the actual F.R.T. for this product.

When several jobs are performed at the same time, make the calculation in the following manner.

a. Jobs of non duplicated nature

The F.R.T. for the job is obtained by totalling the F.R.T. for each part replaced.

(Example) Replacement of head cover gasket and oil filter.

Service item	F.R.T.
Packing, cylinder head cover	0.5
Cartridge, oil filter	0.5

The F.R.T. for the job is: $0.5 + 0.5 = 1.0$

b. Jobs of duplicated nature

Take the F.R.T. for the last part to be replaced.

(Example) Replacement of piston and cylinder head gasket.

Service item	F.R.T.
Gasket comp., cylinder head	3.0
Piston	*5.0

The F.R.T. for the job is: 5.0

c. Jobs of partially related nature

Total up the F.R.T. for all of the parts replaced and then subtract the F.R.T. for the duplicated operation (i.e., cylinder head gasket service).

(Example) Replacement of valve and cylinder head.

Service item	F.R.T.
Valve	*3.0
Head assy., cylinder	*4.0
Gasket comp., cylinder head	*2.5

The F.R.T. for the job is: $(3.0 + 4.0) - 2.5 = 4.5$

- The F.R.T. shown with (*) includes engine removal and installation.
- The parts, having the same number of man-hour, are identified by a mark "*", and classified under the title of their representative work.

4. Adjustment, cleaning, removal and installation

Item	Service item	F.R.T.
Adjustment	Valve clearance	0.3
	Carburetor	0.2
	Governor	0.2
Cleaning	Carburetor	0.6
	Air cleaner element	0.2
	Spark plug	0.1
Removal and installation	Engine	0.2

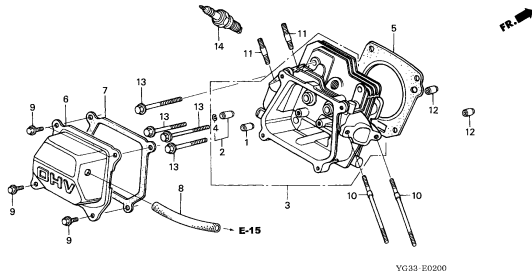
ENGINE GROUP

B11

E-2

CYLINDER HEAD

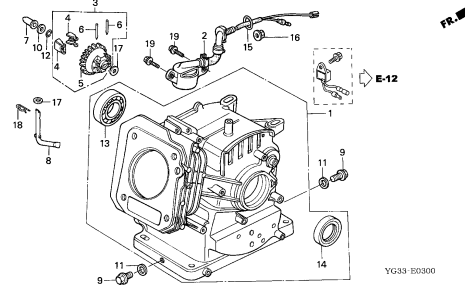
C 1



E-3

CYLINDER BARREL

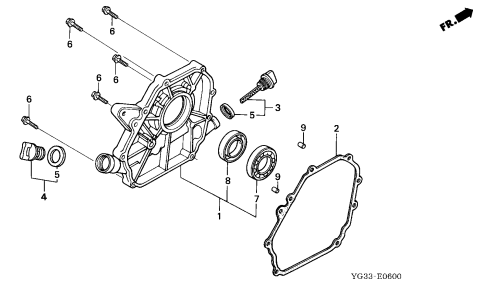
C 2



E-6

CRANKCASE COVER

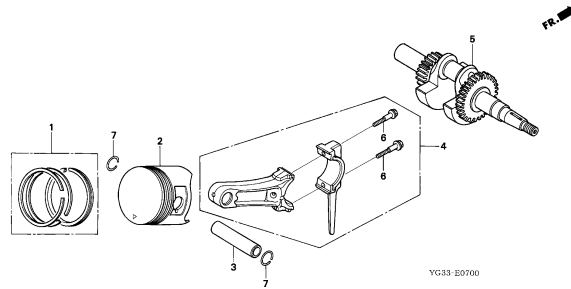
C 4



E-7

PISTON/CONNECTING ROD/CRANKSHAFT

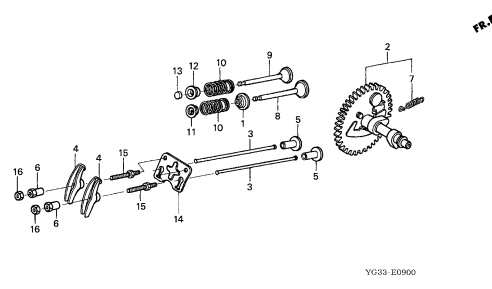
C 5



E-9

CAMSHAFT

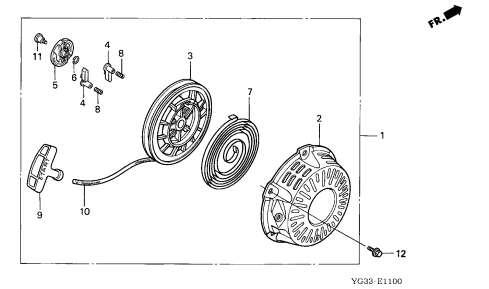
C 7



E-11

RECOIL STARTER(1)

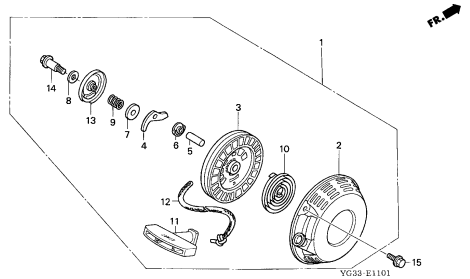
C 8



E-11-1

RECOIL STARTER(2)

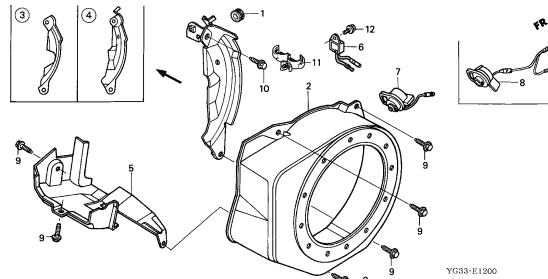
C 9



E-12

FAN COVER/SIDE PLATE

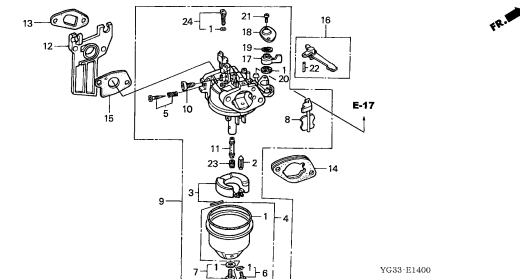
C10



E-14

CARBURETOR

C11



2

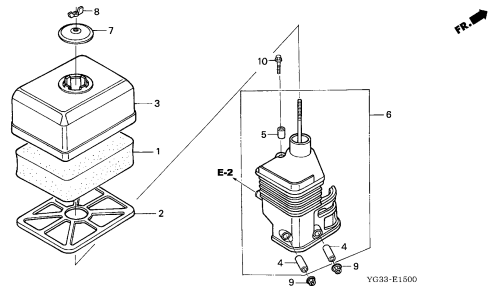
ENGINE GROUP

B12

E-15

AIR CLEANER

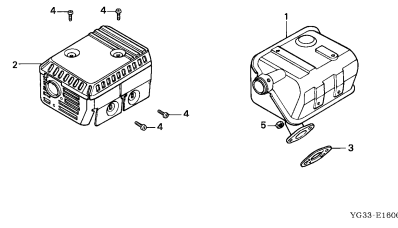
C13



E-16

MUFFLER

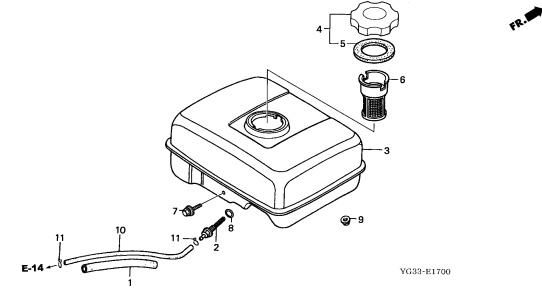
C14



E-17

FUEL TANK

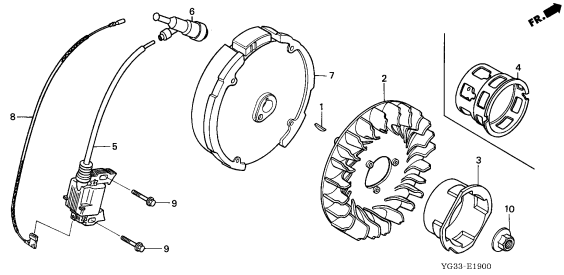
C15



E-19

FLYWHEEL/IGNITION COIL

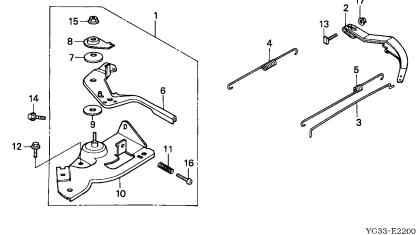
C16



E-22

CONTROL

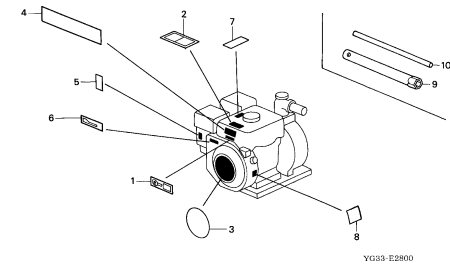
D 1



E-28

LABEL

D 2



2

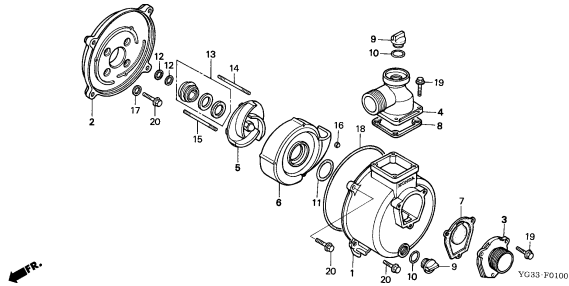
FRAME GROUP

B13

F-1

CASING/IMPELLER(WB20XT)

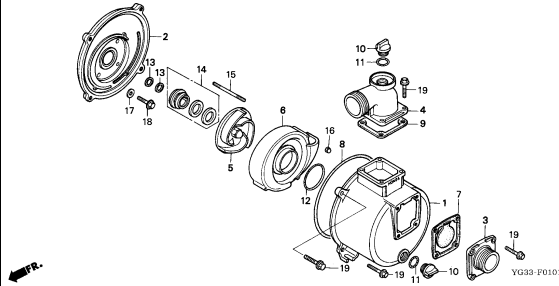
E 1



F-1-1

CASING/IMPELLER(WB30XT)

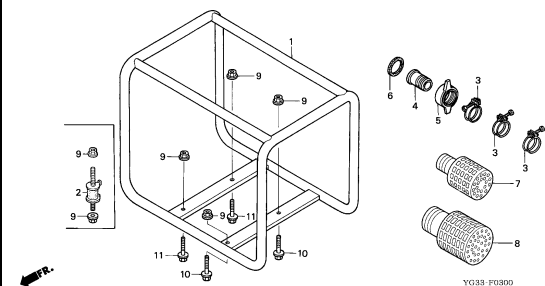
E 2



F-3

FRAME BED/HOSE COUPLING

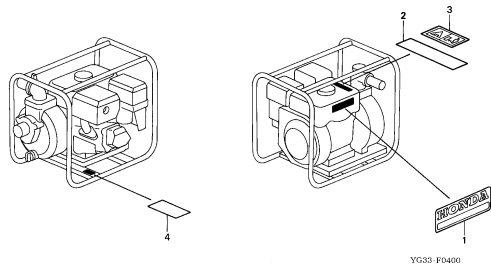
E 3



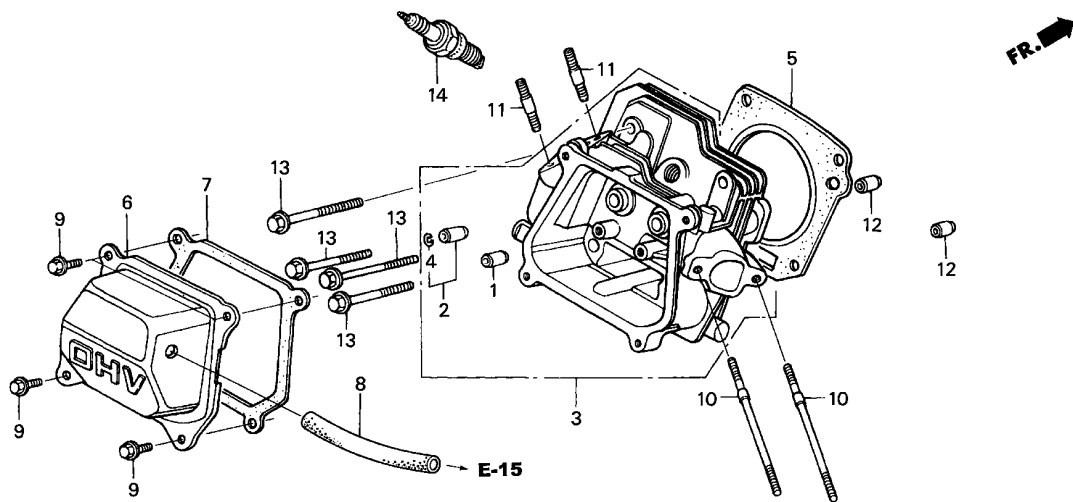
F-4

LABEL

E 4



3



YG33-E0200

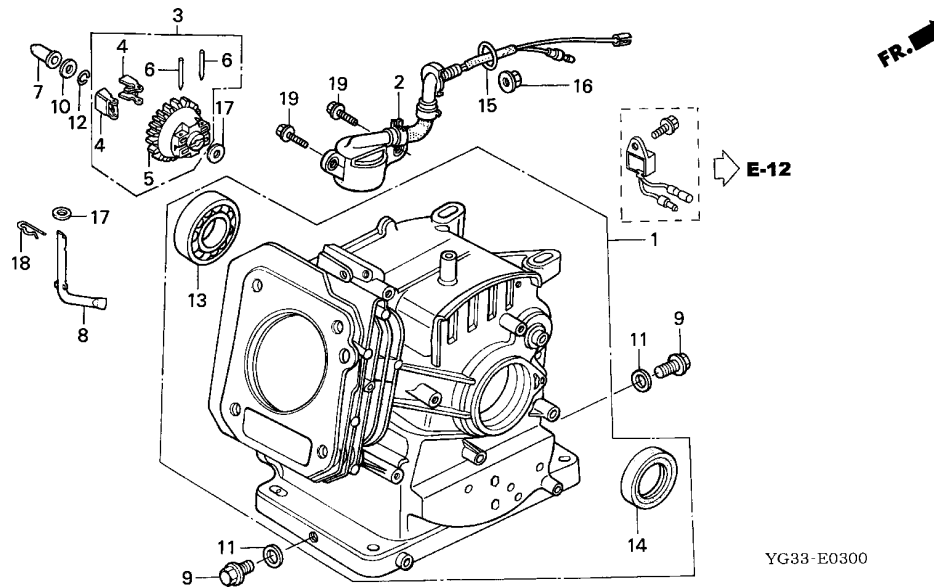
Service item	F.R.T.
COVER COMP., HEAD	0.1
.PACKING, HEAD COVER	
.PLUG, SPARK	
.TUBE, BREATHER	
BOLT, STUD, 6X112	0.2
(ADD 0.1 FOR EACH.)	
.BOLT, STUD, 8X32	
(ADD 0.1 FOR EACH.)	
GASKET, CYLINDER HEAD	0.5
GUIDE, IN. VALVE	0.8
(ADD 0.2 FOR EACH.)	
HEAD COMP., CYLINDER	0.9

Ref. No.	Part No.	Description	Reqd. QTY		Serial No.	Parts catalogue code
			WB 20	WB 30		
			XT	XT		
1	12204-ZE1-306	GUIDE, IN. VALVE (O.S.)	(1)	(1)		
2	12205-ZE1-315	GUIDE, EX. VALVE (O.S.)	(1)	(1)		
3	12210-ZH7-000	HEAD COMP., CYLINDER	1	-		
	12210-ZH8-020	-	1		
4	12216-ZE5-300	CLIP, VALVE GUIDE	1	1		
5	12251-ZH7-800	GASKET, CYLINDER HEAD	1	-		
	12251-ZF1-800	-	1		
6	12310-ZE1-020	COVER COMP., HEAD	1	1	----- DRX,DRXU	
	12310-Z0T-800	COVER COMP., CYLINDER HEAD ..	1	1	----- DR,TR	
7	12391-ZE1-000	PACKING, HEAD COVER	1	1		
8	15721-ZH8-000	TUBE, BREATHER	1	1		
9	90013-883-000	BOLT, FLANGE, 6X12(CT200) ...	4	4		
10	90043-ZE1-020	BOLT, STUD, 6X112	2	2		
11	90047-ZE1-000	BOLT, STUD, 8X32	2	2		
12	94301-10160	DOWEL PIN, 10X16	2	2		
13	95723-08055-00	BOLT, FLANGE, 8X55	4	-		
	95723-08060-00	BOLT, FLANGE, 8X60	-	4		
14	98079-56876	PLUG, SPARK (BPR6ES)	1	1		

E-3

CYLINDER BARREL

C 2



YG33-E0300

Service item	F.R.T.
WASHER, DRAIN PLUG, 10.2MM ...	0.1
SLIDER, GOVERNOR	0.8
O-RING, 14MM	1.0
.SWITCH ASSY., OIL LEVEL	
SHAFT, GOVERNOR ARM	*1.6
HOLDER, GOVERNOR WEIGHT	*1.7
(INC. RELATIVE PART)	
.OIL SEAL, 22X35X6	
.OIL SEAL, 25X41X6	
BEARING, RADIAL BALL	*1.8
BARREL ASSY., CYLINDER	*2.4

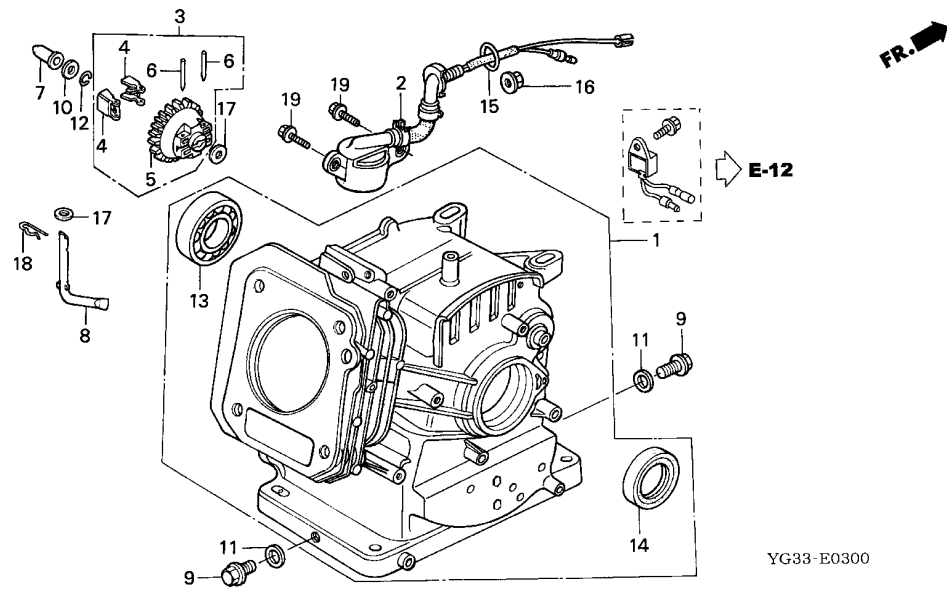
Ref. No.	Part No.	Description	Reqd. QTY		Serial No.	Parts catalogue code
			WB 20 XT	WB 30 XT		
1	12000-Z0S-405	BARREL ASSY., CYLINDER	1	-	----- DR,TR	
	12000-Z0S-416	1	-	----- DRX,DRXU	
	12000-Z0T-405	-	1	----- DR,TR	
	12000-Z0T-406	BARREL ASSY., CYLINDER (OIL ALERT)	-	1	----- DRX,DRXU	
2	15510-ZE1-033	SWITCH ASSY., OIL LEVEL	1	1	----- DRX,DRXU	
3	16510-ZE1-000	GOVERNOR ASSY.	1	1		
4	16511-ZE1-000	WEIGHT, GOVERNOR	2	2		
5	16512-ZE1-000	HOLDER, GOVERNOR WEIGHT	1	1		
6	16513-ZE1-000	PIN, GOVERNOR WEIGHT	2	2		
7	16531-ZE1-000	SLIDER, GOVERNOR	1	1		
8	16541-ZE1-000	SHAFT, GOVERNOR ARM	1	1		
9	90131-ZE1-000	BOLT, DRAIN PLUG	2	2		
10	90451-ZE1-000	WASHER, THRUST, 6MM	1	1		
11	90601-ZE1-000	WASHER, DRAIN PLUG, 10.2MM ..	2	2		
12	90602-ZE1-000	CLIP, GOVERNOR HOLDER	1	1		
13	91001-878-003	BEARING, RADIAL BALL, 62/22 ..	1	-		
	91001-ZF1-003	BEARING, RADIAL BALL (6205TMB) (NTN)	-	1		
	91001-ZF1-004	BEARING, RADIAL BALL (6205SH) (KOYO)	-	1		
14	91202-ZE6-013	OIL SEAL, 22X35X6	1	-		
	91201-Z0T-801	OIL SEAL, 25X41X6	-	1		
15	91353-671-004	O-RING, 14MM(NOK)	1	1	----- DRX,DRXU	
16	94050-10000	NUT, FLANGE, 10MM	1	1	----- DRX,DRXU	
17	94101-06800	WASHER, PLAIN, 6MM	2	2		

2

E-3

CYLINDER BARREL

C 3



YG33-E0300

Ref. No.	Part No.	Description	Reqd. QTY		Serial No.	Parts catalogue code
			WB 20 XT	WB 30 XT		

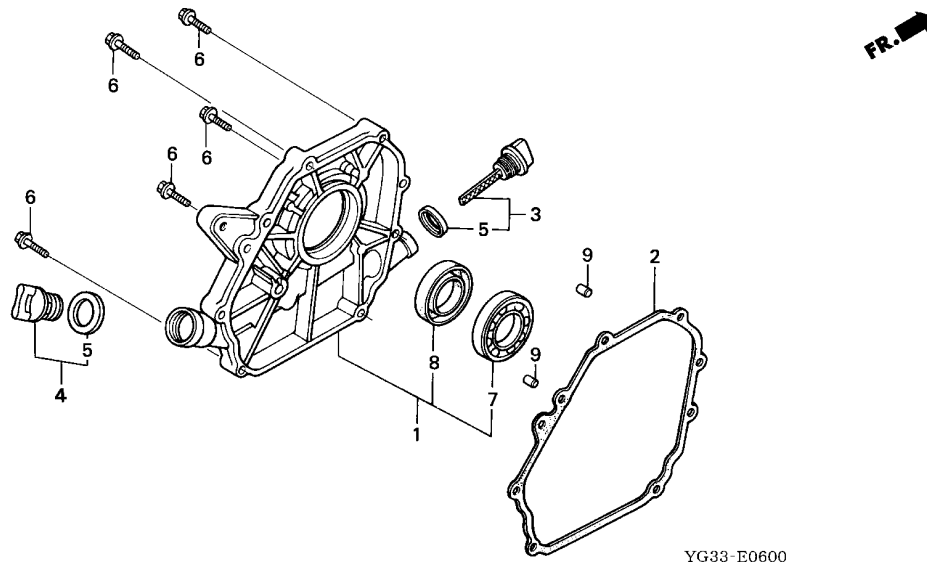
18	94251-08000	PIN, LOCK, 8MM	1	1		
19	95701-06012-00	BOLT, FLANGE, 6X12	2	2	-----	----- DRX,DRXU

2

E-6

CRANKCASE COVER

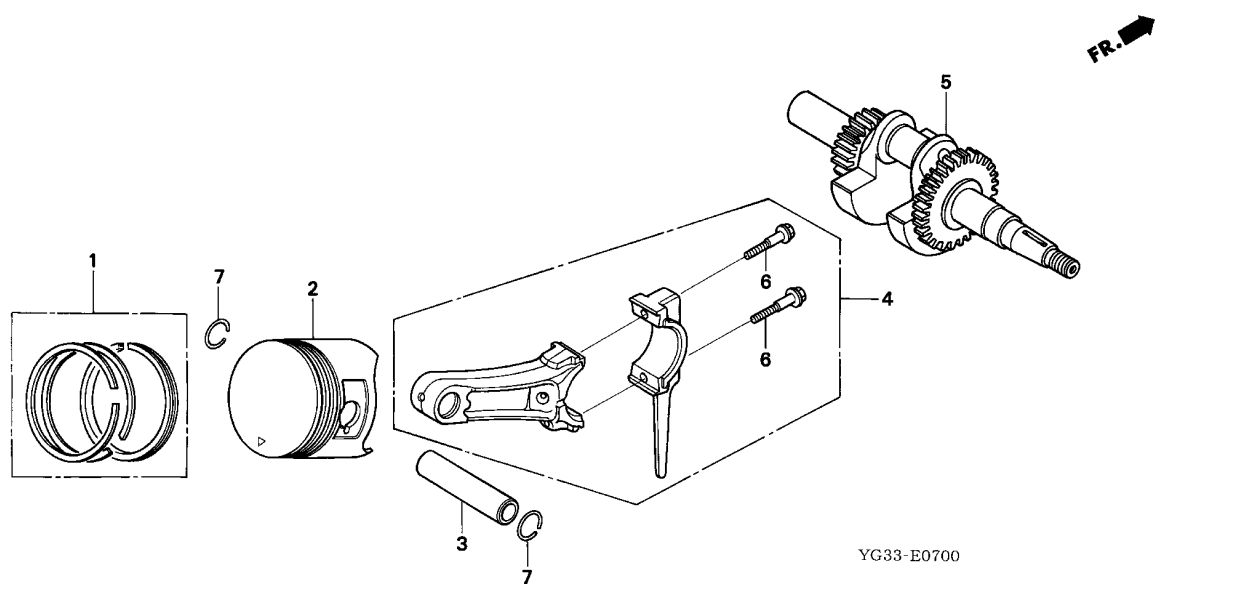
C 4



Service item	F.R.T.
COVER ASSY., CRANKCASE	0.6
.PACKING, CASE COVER	
BEARING, RADIAL BALL, 62/22 ..	0.7
.OIL SEAL, 22X41X6	
.OIL SEAL, 25X41X6	

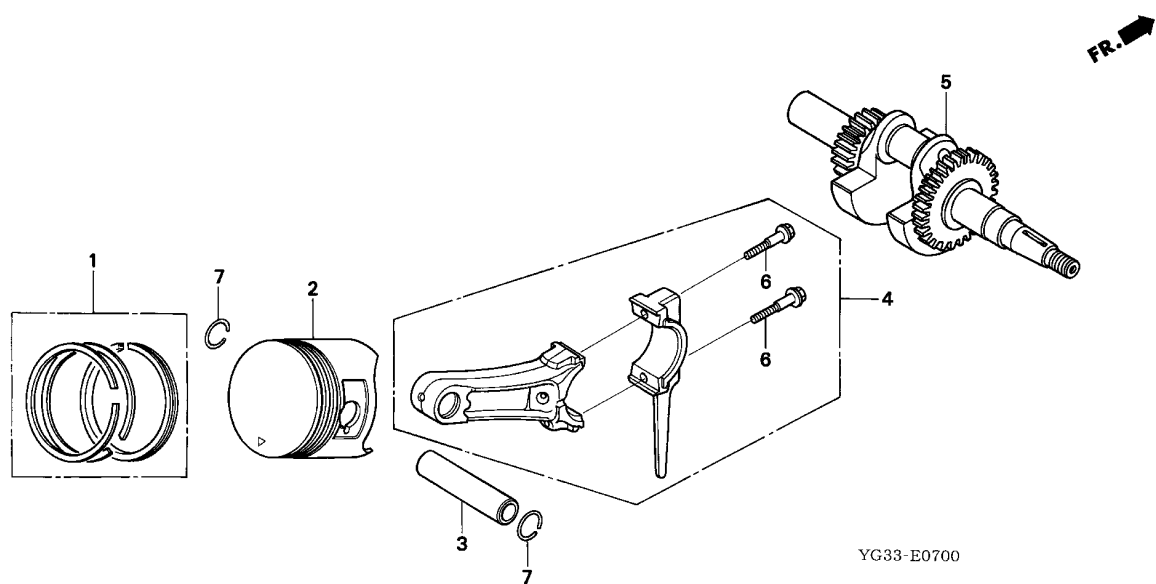
Ref. No.	Part No.	Description	Reqd. QTY		Serial No.	Parts catalogue code
			WB 20 XT	WB 30 XT		
1	11300-ZE0-634	COVER ASSY., CRANKCASE	1	-		
	11300-ZE1-634	-	1		
2	11381-ZH7-800	PACKING, CASE COVER	1	-		
	11381-ZH8-801	PACKING, CASE COVER (NON ASBEST)	-	1		
3	15600-Z0T-810	CAP ASSY., OIL FILLER	1	1		
4	15600-Z0T-820	CAP ASSY., OIL FILLER	1	1		
5	15625-Z0T-800	PACKING, OIL FILLER CAP	2	2		
6	90015-883-000	BOLT, FLANGE, 6X28	7	-		
	95701-08032-00	BOLT, FLANGE, 8X32	-	6		
7	91001-878-003	BEARING, RADIAL BALL, 62/22 ..	1	-		
	96100-62050-00	BEARING, RADIAL BALL, 6205 ..	-	1		
8	91203-ZE0-013	OIL SEAL, 22X41X6	1	-		
	91201-Z0T-801	OIL SEAL, 25X41X6	-	1		
9	94301-08140	DOWEL PIN, 8X14	2	2		

2



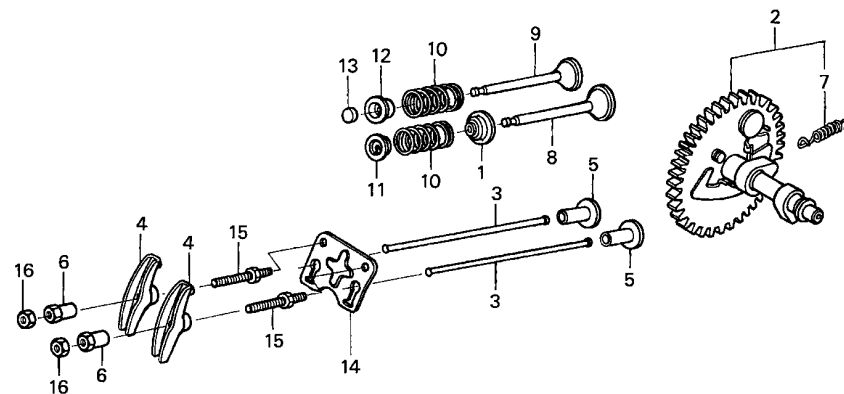
Service item	F.R.T.
CRANKSHAFT COMP.	*1.7
ROD ASSY., CONNECTING	
PISTON	*1.8
RING SET, PISTON	

Ref. No.	Part No.	Description	Reqd. QTY		Serial No.	Parts catalogue code
			WB 20 XT	WB 30 XT		
1	13010-ZOS-801	RING SET, PISTON (STD.)	1	-		
	13010-ZOT-801	-	1		
	13011-ZOS-801	RING SET, PISTON (0.25)	(1)	-		
	13011-ZOT-801	RING SET, PISTON (0.25)(RIKEN)	-	(1)		
	13012-ZOS-801	RING SET, PISTON (0.50)	(1)	-		
	13012-ZOT-801	RING SET, PISTON (0.50)(RIKEN)	-	(1)		
	13013-ZOS-801	RING SET, PISTON (0.75)	(1)	-		
	13013-ZOT-801	RING SET, PISTON (0.75)(RIKEN)	-	(1)		
2	13101-ZOS-800	PISTON (STD.)	1	-	-----	DR, TR
	13101-ZOS-810	1	-	-----	DRX, DRXU
	13101-ZOT-800	-	1	-----	DR, TR
	13101-ZOT-810	-	1	-----	DRX, DRXU
	13102-ZOS-800	PISTON (0.25)	(1)	-	-----	DR, TR
	13102-ZOS-810	(1)	-	-----	DRX, DRXU
	13102-ZOT-800	-	(1)	-----	DR, TR
	13102-ZOT-810	-	(1)	-----	DRX, DRXU
	13103-ZOS-800	PISTON (0.50)	(1)	-	-----	DR, TR
	13103-ZOS-810	(1)	-	-----	DRX, DRXU
	13103-ZOT-800	-	(1)	-----	DR, TR
	13103-ZOT-810	-	(1)	-----	DRX, DRXU
	13104-ZOS-800	PISTON (0.75)	(1)	-	-----	DR, TR
	13104-ZOS-810	(1)	-	-----	DRX, DRXU
	13104-ZOT-800	-	(1)	-----	DR, TR
	13104-ZOT-810	-	(1)	-----	DRX, DRXU
3	13111-ZE0-000	PIN, PISTON	1	-		
	13111-ZE1-000	-	1		
4	13200-ZOS-800	ROD ASSY., CONNECTING	1	-		
	13200-ZOT-800	-	1		
5	13310-ZOS-850	CRANKSHAFT COMP. (WB-TYPE) ..	1	-		



Ref. No.	Part No.	Description	Reqd. QTY		Serial No.	Parts catalogue code
			WB 20 XT	WB 30 XT		
(5)	13310-Z0T-870	CRANKSHAFT COMP. (WB-TYPE) ..	-	1		
6	90001-ZE1-000	BOLT, CONNECTING ROD	2	2		
7	90551-ZE0-000	CLIP, PISTON PIN, 13MM	2	-		
	90551-ZE1-000	CLIP, PISTON PIN, 18MM	-	2		

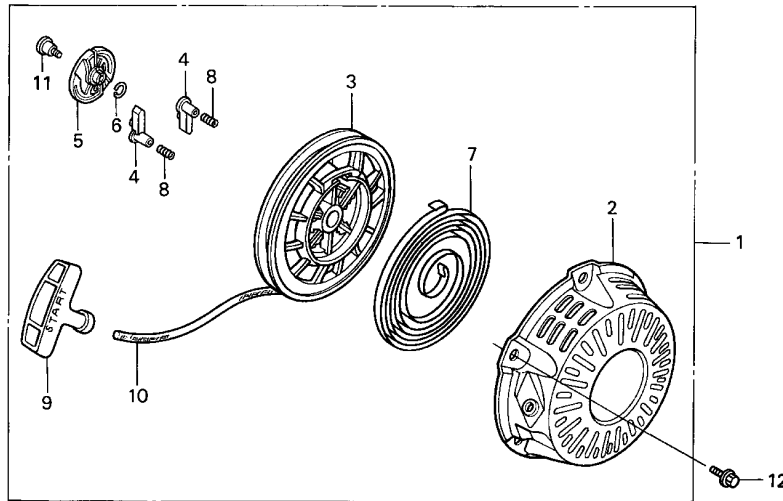




YG33-E0900

Service item	F.R.T.
ARM, VALVE ROCKER	0.2
(ADD 0.1 FOR EACH.)	
.ROD, PUSH	
.ROTATOR, VALVE	
BOLT, PIVOT, 8MM	0.3
(ADD 0.1 FOR EACH.)	
VALVE	0.7
CAMSHAFT ASSY.	0.9
.LIFTER, VALVE	

Ref. No.	Part No.	Description	Reqd. QTY		Serial No.	Parts catalogue code
			WB 20 XT	WB 30 XT		
1	12209-ZH8-003	SEAL, VALVE STEM	1	1	----- DRX,DRXU	
2	14100-ZE0-812	CAMSHAFT ASSY.	1	-		
	14100-ZE1-812	-	1		
3	14410-ZE0-010	ROD, PUSH	2	-		
	14410-ZE1-010	-	2		
4	14431-ZE1-000	ARM, VALVE ROCKER	2	2		
5	14441-ZE1-010	LIFTER, VALVE	2	2		
6	14451-ZE1-013	PIVOT, ROCKER ARM	2	2		
7	14568-ZE1-000	SPRING, WEIGHT RETURN	1	1		
8	14711-ZF0-010	VALVE, IN.	1	-		
	14711-ZF1-000	-	1		
9	14721-ZF0-000	VALVE, EX.	1	-		
	14721-ZF1-000	-	1		
10	14751-ZF1-000	SPRING, VALVE	2	2		
11	14771-ZE1-000	RETAINER, IN. VALVE SPRING	1	1		
12	14773-ZE1-000	RETAINER, EX. VALVE SPRING	1	1		
13	14781-ZE1-000	ROTATOR, VALVE	1	1		
14	14791-ZE0-010	PLATE, PUSH ROD GUIDE	1	-		
	14791-ZE1-010	-	1		
15	90012-ZE0-010	BOLT, PIVOT, 8MM	2	2		
16	90206-ZE1-000	NUT, PIVOT ADJUSTING	2	2		

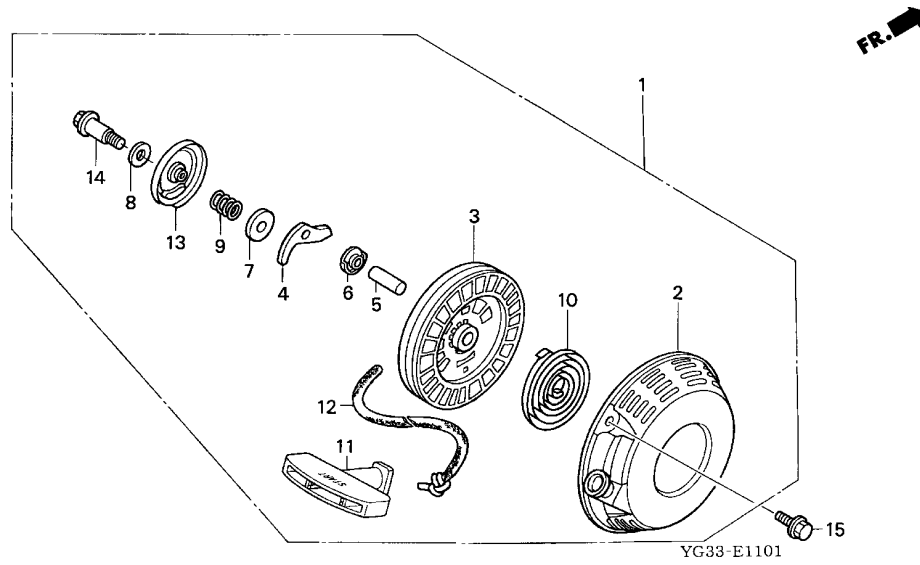


YG33-E1100

Service item	F.R.T.
STARTER ASSY., RECOIL	0.1
RATCHET, STARTER	0.2
REEL, RECOIL STARTER	0.3
.ROPE, RECOIL STARTER	
.SPRING, RECOIL STARTER	

Ref. No.	Part No.	Description	Reqd. QTY		Serial No.	Parts catalogue code
			WB 20 XT	WB 30 XT		
1	28400-ZH8-013YA	STARTER ASSY., RECOIL *R280*.....POWER RED	1	1	-----	DRX,DRXU
2	28410-ZH8-003YA	CASE COMP., RECOIL STARTER *R280*.....POWER RED	1	1	-----	DRX,DRXU
3	28420-ZH8-013	REEL, RECOIL STARTER (NATURAL)	1	1	-----	DRX,DRXU
4	28422-ZH8-013	RATCHET, STARTER	2	2	-----	DRX,DRXU
5	28433-ZH8-003	GUIDE, RATCHET	1	1	-----	DRX,DRXU
6	28441-ZH8-003	SPRING, FRICTION	1	1	-----	DRX,DRXU
7	28442-ZH8-003	SPRING, RECOIL STARTER	1	1	-----	DRX,DRXU
8	28443-ZH8-003	SPRING, RETURN	2	2	-----	DRX,DRXU
9	28461-ZH8-003	GRIP, STARTER	1	1	-----	DRX,DRXU
10	28462-ZH8-003	ROPE, RECOIL STARTER	1	1	-----	DRX,DRXU
11	90003-ZH8-003	SCREW, SETTING	1	1	-----	DRX,DRXU
12	90008-ZE2-003	BOLT, FLANGE, 6X10	3	3	-----	DRX,DRXU

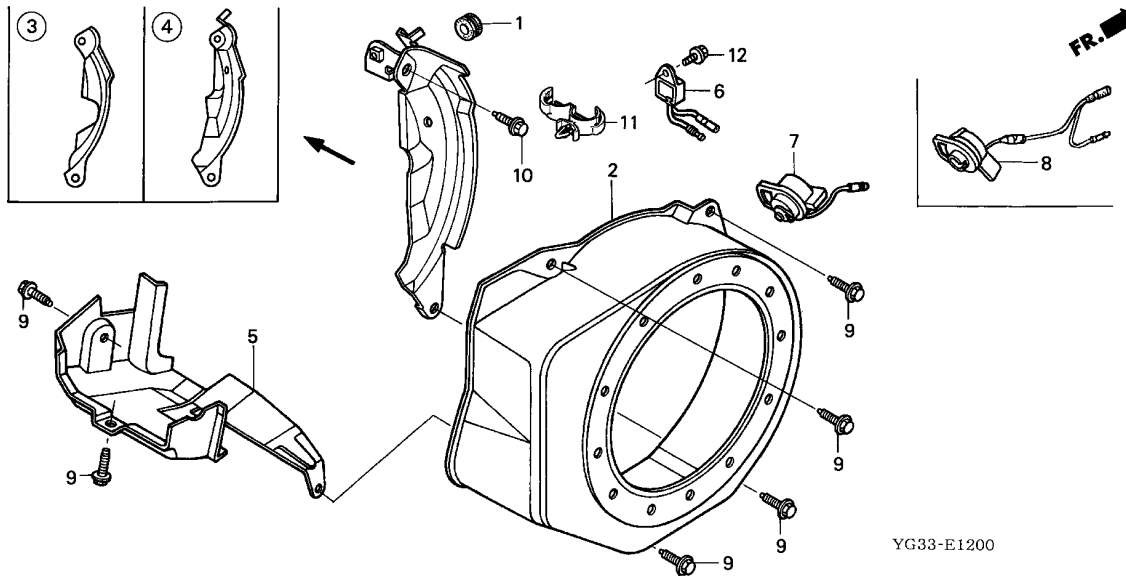




Service item	F.R.T.
STARTER ASSY., RECOIL	0.1
RATCHET, STARTER	0.2
REEL, STARTER	0.3
.ROPE, RECOIL STARTER	
.SPRING, STARTER RETURN	

Ref. No.	Part No.	Description	Reqd. QTY		Serial No.	Parts catalogue code
			WB 20 XT	WB 30 XT		
1	28400-Z0T-800ZB	STARTER ASSY., RECOIL *R280*.....POWER RED	1	1	-----	----- DR,TR
2	28410-Z0T-800ZB	CASE COMP., STARTER *R280*.....POWER RED	1	1	-----	----- DR,TR
3	28421-883-T20	REEL, STARTER	1	1	-----	----- DR,TR
4	28422-883-T20	RATCHET, STARTER	1	1	-----	----- DR,TR
5	28423-883-T20	SHAFT, RATCHET	1	1	-----	----- DR,TR
6	28429-883-T20	PLATE	1	1	-----	----- DR,TR
7	28431-883-T20	PLATE A, FRICTION	1	1	-----	----- DR,TR
8	28432-883-T20	PLATE B, FRICTION	1	1	-----	----- DR,TR
9	28441-883-T20	SPRING, FRICTION	1	1	-----	----- DR,TR
10	28442-Z0T-800	SPRING, STARTER RETURN	1	1	-----	----- DR,TR
11	28461-Z0T-800	GRIP, STARTER	1	1	-----	----- DR,TR
12	28462-883-T20	ROPE, RECOIL STARTER	1	1	-----	----- DR,TR
13	28474-Z0T-800	COVER, STARTER REEL	1	1	-----	----- DR,TR
14	90003-883-T20	BOLT, REEL COVER	1	1	-----	----- DR,TR
15	90008-ZE2-003	BOLT, FLANGE, 6X10	3	3	-----	----- DR,TR

2



Service item	F.R.T.
ALERT UNIT, OIL	0.1
.COVER COMP., FAN	
.SHROUD COMP.	
SWITCH ASSY., ENGINE STOP	0.2
PLATE COMP., SIDE	0.3

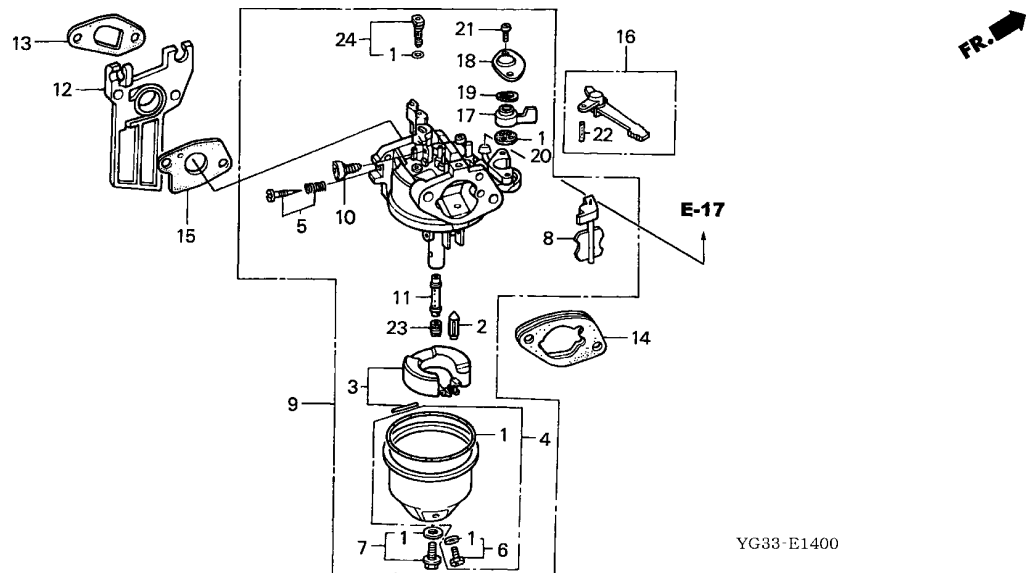
Ref. No.	Part No.	Description	Reqd. QTY		Serial No.	Parts catalogue code
			WB 20 XT	WB 30 XT		
1	11347-371-300	GROMMET, ADJUSTING COVER	1	-		
2	19610-ZE0-000ZS	COVER COMP., FAN				
		R280.....POWER RED	1	-		
	19610-ZE1-000ZP	*R280*.....POWER RED	-	1		
3	19611-ZH7-810	PLATE COMP., SIDE (OIL ALERT)	1	-	-----	DRX,DRXU
	19612-ZH7-000	PLATE, SIDE (STD.)	1	-	-----	DR,TR
4	19611-ZH8-810	PLATE COMP., SIDE (OIL ALERT)	-	1	-----	DRX,DRXU
	19612-ZH8-000	PLATE, SIDE (STD.)	-	1	-----	DR,TR
5	19630-ZH7-000	SHROUD COMP.	1	-		
	19630-ZH8-000	-	1		
6	34150-ZH7-003	ALERT UNIT, OIL	1	1	-----	DRX,DRXU
7	35120-Z0T-801	SWITCH ASSY., ENGINE STOP	1	1	-----	DR,TR
8	35120-Z0T-851	SWITCH ASSY., ENGINE STOP	1	1	-----	DRX,DRXU
9	90013-883-000	BOLT, FLANGE, 6X12(CT200) ...	6	6		
10	90022-888-010	BOLT, FLANGE, 6X20(CT200) ...	1	1		
11	90601-ZH7-013	CLIP, HARNESS	1	1	-----	DRX,DRXU
12	95701-06008-00	BOLT, FLANGE, 6X8	1	1	-----	DRX,DRXU



E-14

CARBURETOR

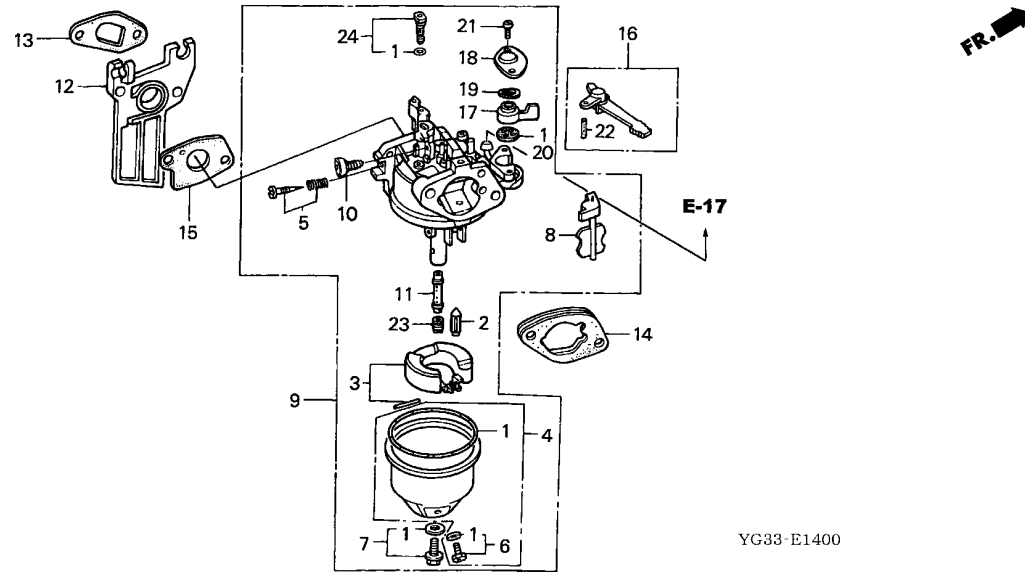
C11



YG33-E1400

Service item	F.R.T.
CARBURETOR ASSY.	0.2
.INSULATOR, CARBURETOR	
.LEVER COMP., CHOKE	
.PACKING, FUEL COCK	
.PACKING, INSULATOR	
.SCREW SET, PILOT	
FLOAT SET	0.3
.GASKET SET	
.JET, MAIN,	
.VALVE SET, FLOAT	

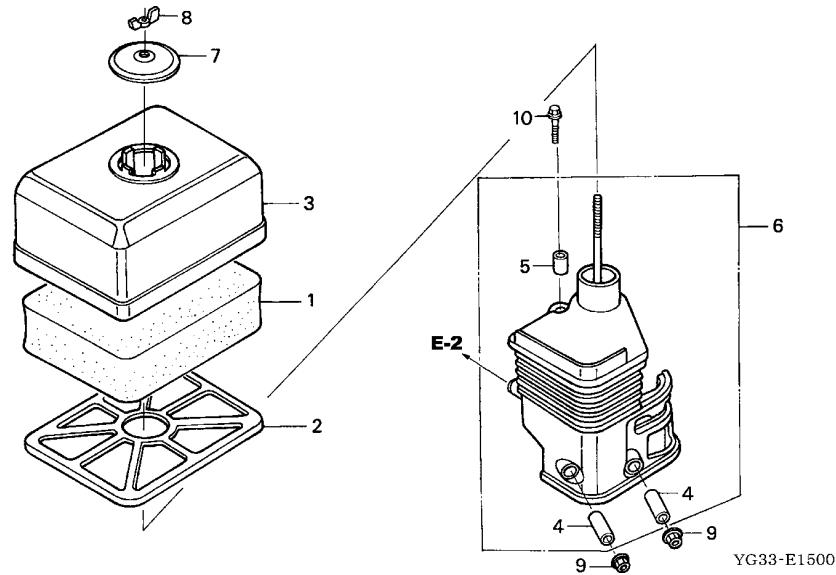
Ref. No.	Part No.	Description	Reqd. QTY		Serial No.	Parts catalogue code
			WB 20 XT	WB 30 XT		
1	16010-ZE0-025	GASKET SET	1	1		
2	16011-ZE0-005	VALVE SET, FLOAT	1	1		
3	16013-ZOS-B01	FLOAT SET	1	1		
4	16015-ZE0-831	CHAMBER SET, FLOAT	1	1		
5	16016-ZE0-005	SCREW SET, PILOT	1	1		
6	16024-ZE1-811	SCREW SET, DRAIN	1	1		
7	16028-ZE0-005	SCREW SET	1	1		
8	16044-ZE0-005	CHOKE SET	1	1		
9	16100-ZOS-831	CARBURETOR ASSY. (BE61J A) ..	1	-		
	16100-ZOT-831	CARBURETOR ASSY. (BE66G A) ..	-	1		
10	16124-ZE0-005	SCREW, THROTTLE STOP	1	1		
11	16166-ZH7-W50	NOZZLE, MAIN	1	-		
	16166-ZH8-W60	-	1		
12	16211-ZE0-000	INSULATOR, CARBURETOR	1	-		
	16211-ZE1-000	-	1		
13	16212-ZH7-800	PACKING, INSULATOR	1	-		
	16212-ZH8-800	-	1		
14	16220-ZE1-020	SPACER COMP., CARBURETOR	1	1		
15	16221-ZH8-801	PACKING, CARBURETOR	1	1		
16	16610-ZE1-000	LEVER COMP., CHOKE (STD.) ...	1	1		
17	16953-ZE1-812	LEVER, COCK	1	1		
18	16954-ZE1-812	PLATE, LEVER SETTING	1	1		
19	16956-ZE1-811	SPRING, COCK LEVER	1	1		
20	16957-ZE1-812	PACKING, FUEL COCK	1	1		
21	93500-03006-1H	SCREW, PAN, 3X6	2	2		



YG33-E1400

Ref. No.	Part No.	Description	Reqd. QTY		Serial No.	Parts catalogue code
			WB 20 XT	WB 30 XT		
22	94305-20122	PIN, SPRING, 2X12	1	1		
23	99101-ZH8-0620	JET, MAIN, #62	1	-		
	99101-ZH8-0700	JET, MAIN, #70	-	1		
	99101-ZH8-0580	JET, MAIN, #58	(1)	-		
	99101-ZH8-0600	JET, MAIN, #60	(1)	-		
	99101-ZH8-0680	JET, MAIN, #68	-	(1)		
24	99204-ZE0-0350	JET SET, PILOT, #35	1	1		



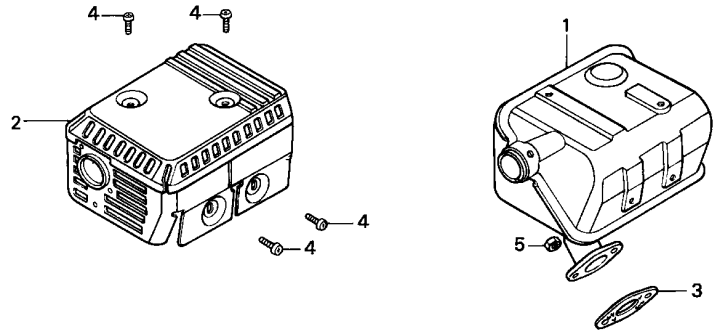


FR. →

Service item	F.R.T.
ELBOW COMP., AIR CLEANER	0.1
.ELEMENT, AIR CLEANER	

Ref. No.	Part No.	Description	Reqd. QTY		Serial No.	Parts catalogue code
			WB 20 XT	WB 30 XT		
1	17211-ZE1-000	ELEMENT, AIR CLEANER	1	1		
2	17212-ZE1-000	GRID, AIR CLEANER (SEMI DRY)	1	1		
3	17231-ZE0-000	COVER, AIR CLEANER (SEMI DRY)	1	-		
	17231-ZE1-000	-	1		
4	17238-ZE0-010	COLLAR, AIR CLEANER	2	-		
	17238-ZE7-010	-	2		
5	17239-ZE1-000	COLLAR B, AIR CLEANER	1	1		
6	17410-ZE0-030	ELBOW COMP., AIR CLEANER	1	-		
	17410-ZE1-020	-	1		
7	17421-ZE1-000	CAP, CLEANER	1	1		
8	90325-044-000	NUT, TOOL BOX SETTING	1	1		
9	94050-06000	NUT, FLANGE, 6MM	2	2		
10	95701-06020-00	BOLT, FLANGE, 6X20	1	1		

FR. →



YG33-E1600

Service item	F.R.T.
GASKET, MUFFLER	0.2
.MUFFLER COMP.	
.PROTECTOR, MUFFLER	

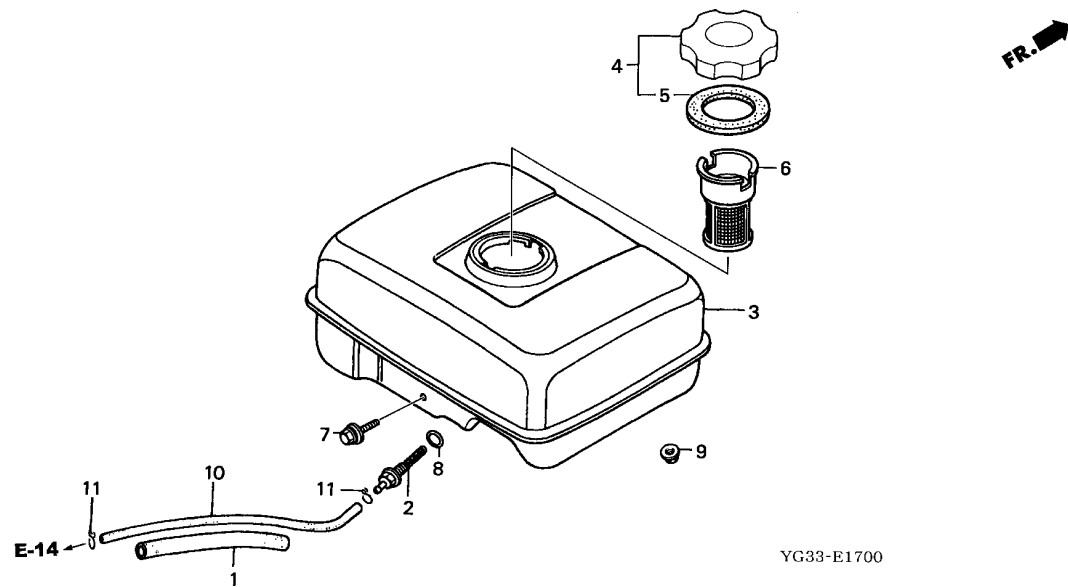
Ref. No.	Part No.	Description	Reqd. QTY		Serial No.	Parts catalogue code
			WB 20 XT	WB 30 XT		
1	18310-ZF1-000	MUFFLER COMP.	1	1		
2	18320-ZF1-H01	PROTECTOR, MUFFLER (STD.) (BLACK)	1	1		
3	18381-ZH8-800	GASKET, MUFFLER	1	1		
4	90050-ZE1-000	SCREW, TAPPING, 5X8	4	4		
5	94001-08000-0S	NUT, HEX., 8MM	2	2		



E-17

FUEL TANK

C15



Service item	F.R.T.
JOINT, FUEL TANK	0.2
.O-RING, 14MM	
.TANK COMP., FUEL	
.TUBE, FUEL, 4.5X140	

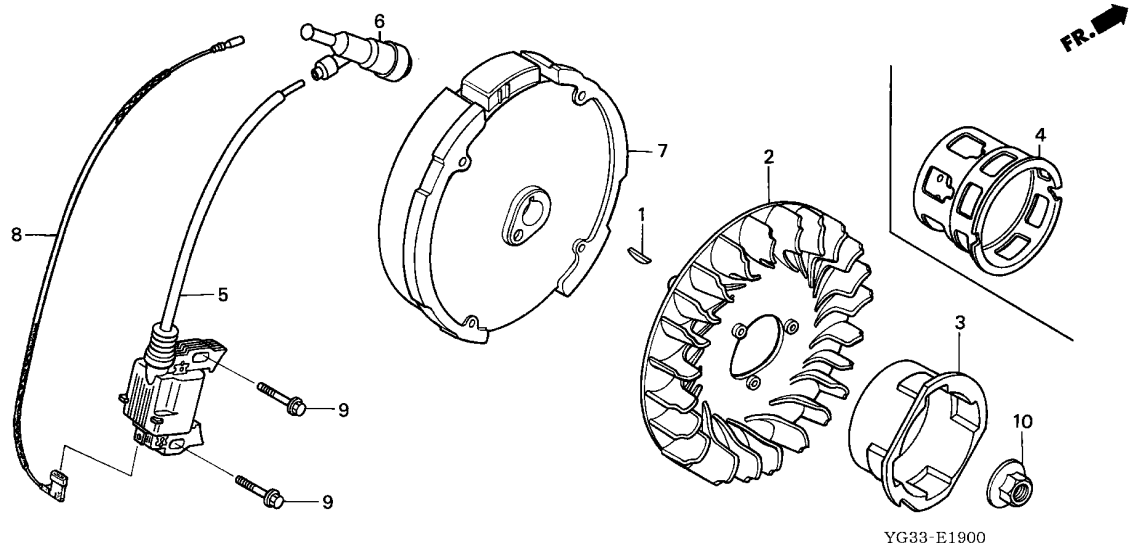
Ref. No.	Part No.	Description	Reqd. QTY		Serial No.	Parts catalogue code
			WB 20	WB 30		
			XT	XT		
1	16854-ZH8-000	RUBBER, SUPPORTER (107MM) ...	1	1		
2	16955-ZE1-000	JOINT, FUEL TANK	1	1		
3	17510-ZE0-020ZA	TANK COMP., FUEL				
		NH31.....MCKINLEY WHITE	1	-		
		NH31.....MCKINLEY WHITE	-	1		
4	17620-ZOT-811	CAP COMP., FUEL FILLER	1	1		
5	17631-ZOT-801	PACKING, FUEL FILLER CAP	1	1		
6	17672-ZE2-W01	FILTER, FUEL	(1)	(1)		
7	90004-ZH7-003	BOLT, FLANGE, 6X29	1	1		
8	91353-671-004	O-RING, 14MM(NOK)	1	1		
9	94050-06000	NUT, FLANGE, 6MM	2	2		
10	95001-45140-40	TUBE, FUEL, 4.5X140				
		(95001-45001-60M)	1	1		
11	95002-02080	CLIP, TUBE (B8)	2	2		

2

E-19

FLYWHEEL/IGNITION COIL

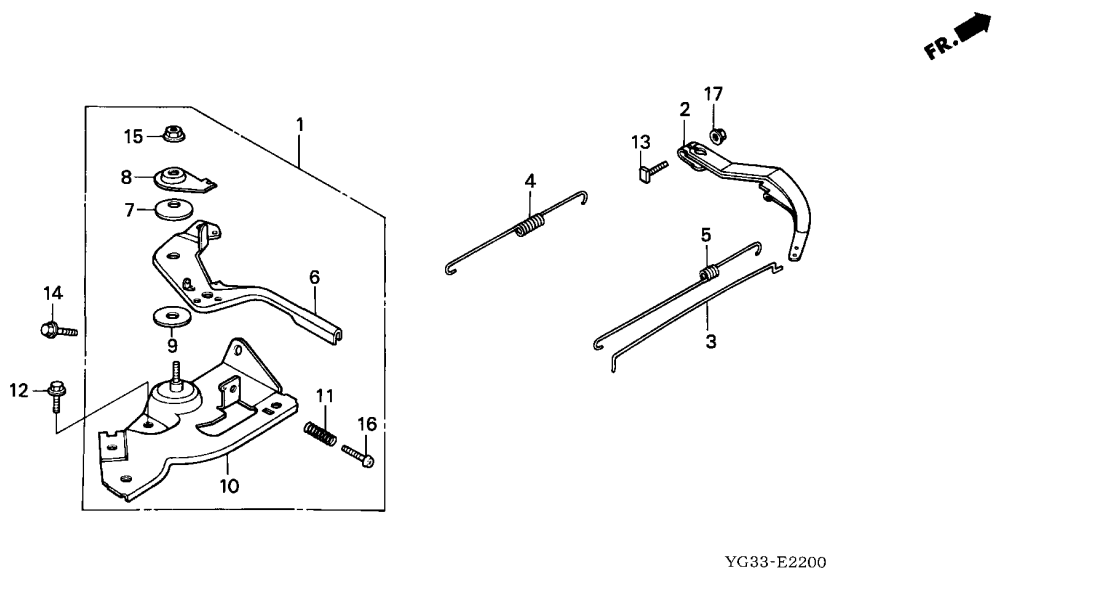
C16



Service item	F.R.T.
CAP ASSY., NOISE SUPPRESSOR ..	0.1
FAN, COOLING	0.2
.PULLEY, STARTER	
COIL ASSY., IGNITION	0.3
.CORD, STOP SWITCH	
.FLYWHEEL COMP.	

Ref. No.	Part No.	Description	Reqd. QTY		Serial No.	Parts catalogue code
			WB 20 XT	WB 30 XT		
1	13331-357-000	KEY, SPECIAL WOODRUFF, 25X18	1	1		
2	19511-ZE0-000	FAN, COOLING	1	-		
	19511-ZE1-000	-	1		
3	28451-ZH7-003	PULLEY, STARTER	1	-	----- DRX,DRXU	
	28451-ZH8-003	-	1	----- DRX,DRXU	
4	28451-Z0S-800	PULLEY, STARTER	1	-	----- DR,TR	
	28451-Z0T-800	-	1	----- DR,TR	
5	30500-Z0T-801	COIL ASSY., IGNITION	1	1		
6	30700-Z0T-811	CAP ASSY., NOISE SUPPRESSOR ..	1	1		
7	31100-ZE0-010	FLYWHEEL COMP.	1	-		
	31100-ZE1-010	-	1		
8	36101-ZE1-010	CORD, STOP SWITCH (370MM) ...	1	1		
9	90121-952-000	BOLT, FLANGE, 6X25	2	2		
10	90201-Z0T-800	NUT, SPECIAL, 14MM	1	1		

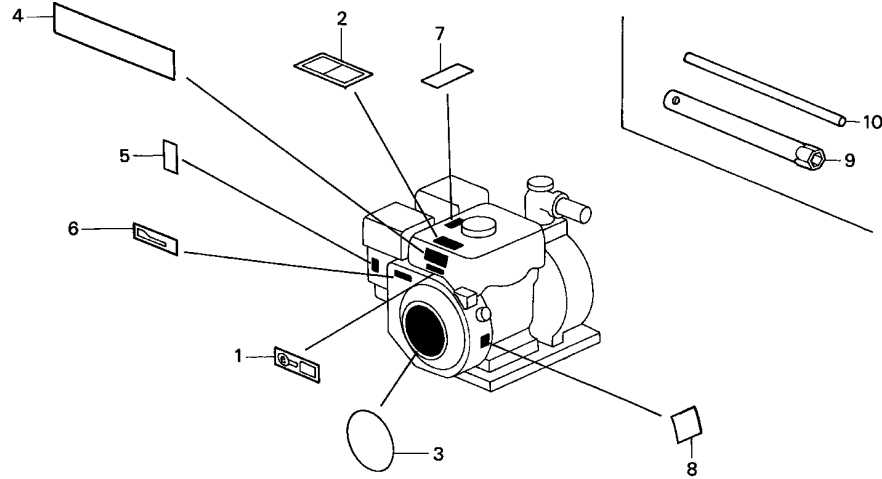
2



YG33-E2200

Service item	F.R.T.
ARM, GOVERNOR	0.2
.CONTROL ASSY. (INC. RELATIVE PART)	
.SPRING, GOVERNOR	
ROD, GOVERNOR	0.3

Ref. No.	Part No.	Description	Reqd. QTY		Serial No.	Parts catalogue code
			WB 20 XT	WB 30 XT		
1	16500-ZH7-000	CONTROL ASSY.	1	-		
	16500-ZH8-030	-	1		
2	16551-ZE0-010	ARM, GOVERNOR	1	1		
3	16555-ZE0-000	ROD, GOVERNOR	1	-		
	16555-ZE1-000	-	1		
4	16561-ZE0-020	SPRING, GOVERNOR	1	-		
	16561-ZE1-020	-	1		
5	16562-ZE0-020	SPRING, THROTTLE RETURN	1	-		
	16562-ZE1-020	-	1		
6	16571-ZH7-000	LEVER, CONTROL	1	-		
	16571-ZH8-020	-	1		
7	16574-ZE1-000	SPRING, LEVER	1	1		
8	16575-ZH8-000	WASHER, CONTROL LEVER	1	1		
9	16578-ZE1-000	SPACER, CONTROL LEVER	1	1		
10	16580-ZH7-000	BASE COMP., CONTROL	1	-		
	16580-ZH8-030	-	1		
11	16584-883-300	SPRING, CONTROL ADJUSTING ...	1	1		
12	90013-883-000	BOLT, FLANGE, 6X12(CT200) ...	1	1		
13	90015-ZE5-010	BOLT, GOVERNOR ARM	1	1		
14	90022-888-010	BOLT, FLANGE, 6X20(CT200) ...	1	-		
	90013-883-000	BOLT, FLANGE, 6X12(CT200) ...	-	1		
15	90114-SAO-000	NUT, SELF-LOCK, 6MM	1	1		
16	93500-05025-OH	SCREW, PAN, 5X25	1	-		
	93500-05025-OA	-	1		
17	94050-06000	NUT, FLANGE, 6MM	1	1		

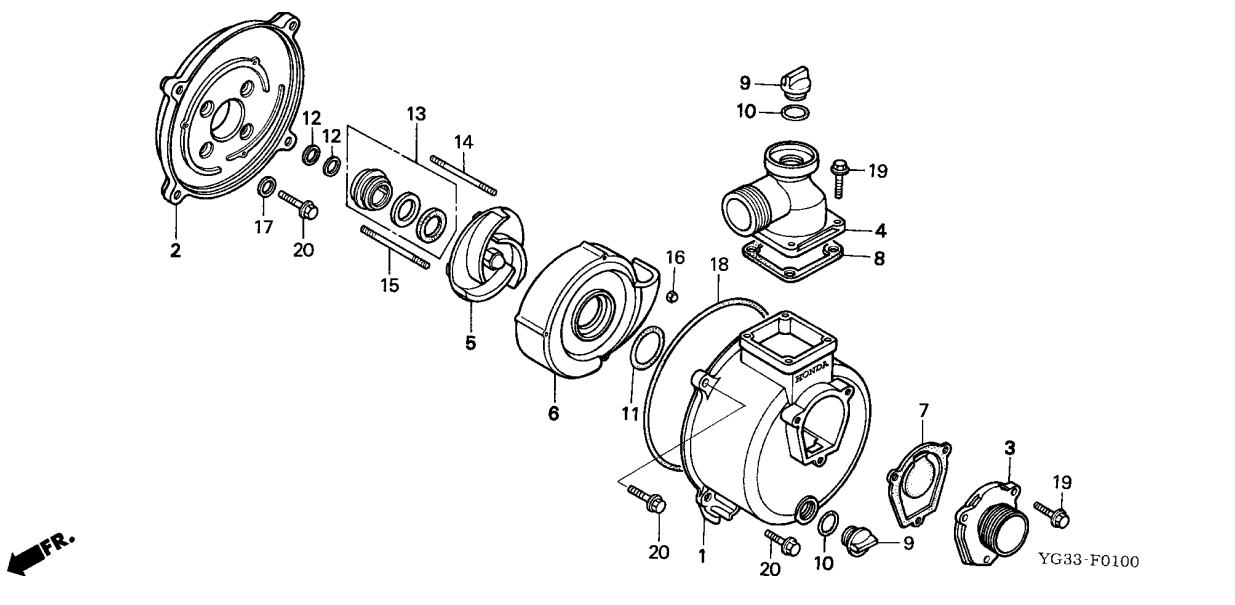


YG33-E2800

Service item F.R.T.
NOT INFORMATION

Ref. No.	Part No.	Description	Reqd. QTY		Serial No.	Parts catalogue code
			WB 20 XT	WB 30 XT		
1	87135-ZE2-010	LABEL (E-SPEC)	1	1	-----	DRX,DRXU
	87135-883-010	LABEL, E-SPEC (THAI)	1	1	-----	DR,TR
2	87516-Z0T-800	MARK, OPERATOR CAUTION	1	1	-----	DRX
3	87521-ZH7-030	EMBLEM	1	-	-----	DRX,DRXU
	87521-ZH8-030	EMBLEM (5.5)	-	1	-----	DRX,DRXU
	87521-Z0S-800	EMBLEM	1	-	-----	DR,TR
	87521-Z0T-800	-	1	-----	DR,TR
4	87522-Z0T-800	LABEL, CAUTION	1	1	-----	DR,DRXU
	87522-Z0T-810	LABEL, CAUTION (THAI)	1	1	-----	TR
5	87528-ZE1-810	MARK, CHOKE	1	1	-----	DR,DRXU
	87528-Z0T-800	MARK, CHOKE (THAI)	1	1	-----	TR
	87528-733-E90	MARK, CHOKE	1	1	-----	DRX
6	87532-ZH8-W40	MARK, THROTTLE INDICATION ...	1	1	-----	DRX
7	87532-ZH8-810	MARK, OIL ALERT (EXTERNAL) ..	1	1	-----	DRXU
8	87594-ZB4-A00	MARK, OIL CAUTION	1	1	-----	
9	89216-Z0T-800	WRENCH, SPARK PLUG (THAI) ...	1	1	-----	
10	89219-805-000	HANDLE, BOX WRENCH	1	1	-----	

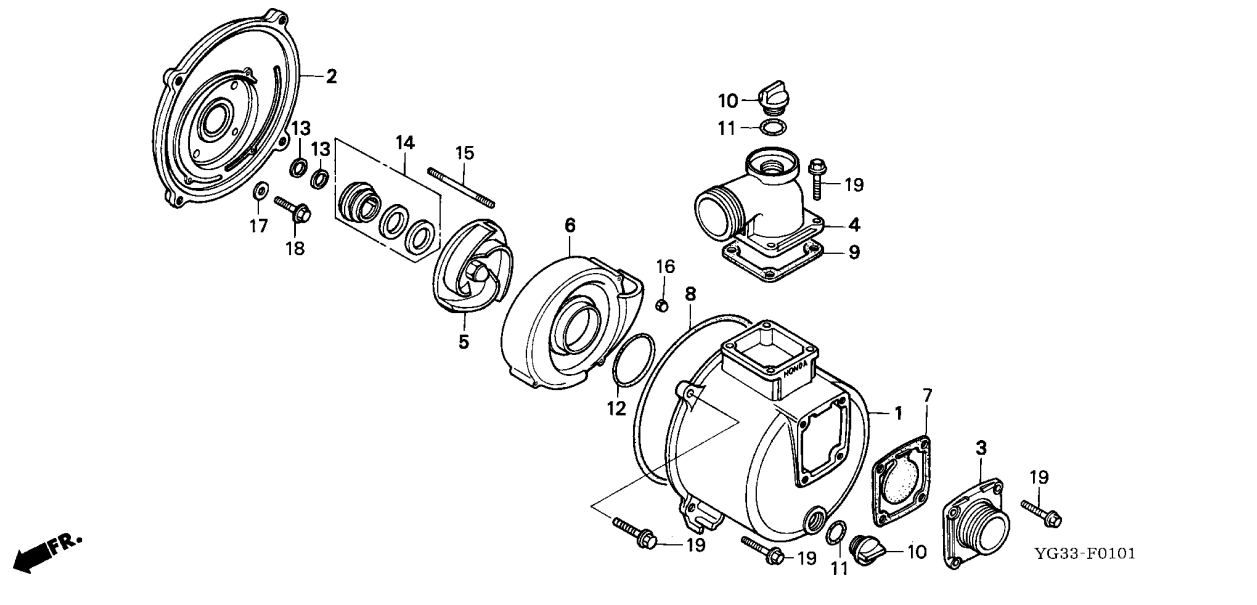




Service item	F.R.T.
OUTLET	0.1
.PACKING, OUTLET	
.VALVE, IN.	
CASE, VOLUTE	0.3
.CASING	
.IMPELLER	
.O-RING, 217.5X3.5	
.O-RING, 49X5.7	
COVER, CASING	0.5
.SEAL, MECHANICAL	

3

Ref. No.	Part No.	Description	Reqd. QTY		Serial No.	Parts catalogue code
			WB 20 XT	WB 30 XT		
1	78101-YG3-000	CASING	1	-		
2	78102-YG3-000	COVER, CASING	1	-		
3	78103-YG3-000	INLET (PF)	1	-		
4	78104-YG3-000	OUTLET (PF)	1	-		
5	78106-YB3-000	IMPELLER	1	-		
6	78107-YB3-K10	CASE, VOLUTE	1	-		
7	78110-YB3-000	VALVE, IN.	1	-		
8	78114-YB3-000	PACKING, OUTLET	1	-		
9	78117-YB3-K10	CAP, FILLER	2	-		
10	78118-YB0-003	RING, SEAL (B)	2	-		
11	78118-YB3-003	O-RING, 49X5.7 (ARAI)	1	-		
	78118-YB3-004	O-RING, 49X5.7 (NOK)	1	-		
12	78122-YB3-000	SHIM, ADJUSTER	2	-		
13	78130-YB4-003	SEAL, MECHANICAL	1	-		
14	90034-402-000	BOLT, STUD, 6X50	2	-		
15	90043-YB4-000	BOLT, STUD, 6X50	1	-		
16	90281-YB4-000	NUT, CAP, 6MM	3	-		
17	90474-333-000	WASHER, SEALING, 8MM	4	-		
18	91351-YB3-003	O-RING, 217.5X3.5 (ARAI)	1	-		
	91351-YB3-004	O-RING, 217.5X3.5 (NOK)	1	-		
19	95701-08025-08	BOLT, FLANGE, 8X25	7	-		
20	95701-08028-08	BOLT, FLANGE, 8X28	8	-		



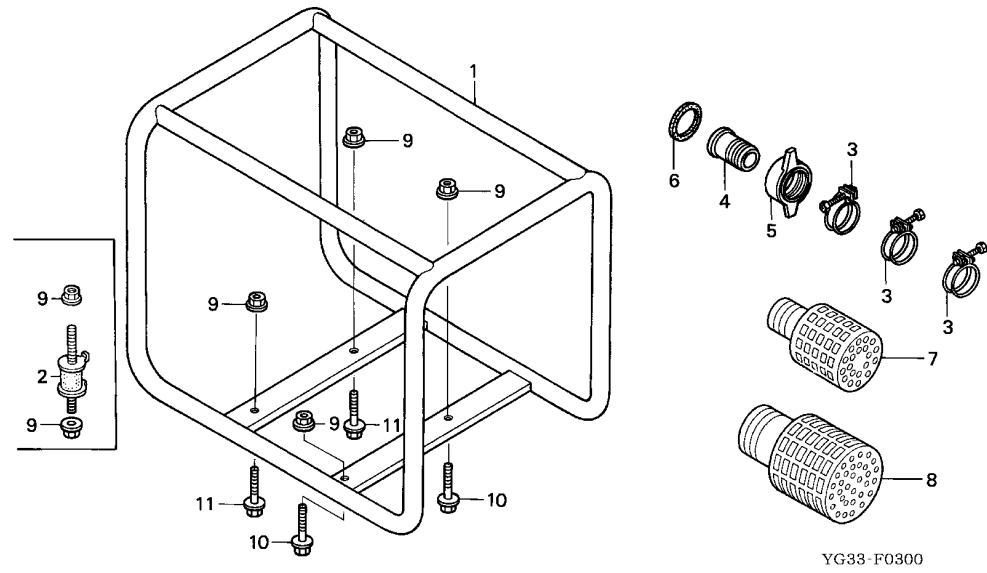
Service item	F.R.T.
OUTLET	0.1
.PACKING, OUTLET	
.VALVE COMP., IN.	
CASE, VOLUTE	0.3
.CASING	
.IMPELLER	
.O-RING, 71X5.7	
.RING, CASING SEAL	
COVER, CASING	0.5
.SEAL, MECHANICAL	

Ref. No.	Part No.	Description	Reqd. QTY		Serial No.	Parts catalogue code
			WB 20 XT	WB 30 XT		
1	78101-YG4-000	CASING	-	1		
2	78102-YG4-000	COVER, CASING	-	1		
3	78103-YG4-000	INLET(PF)	-	1		
4	78104-YG4-000	OUTLET(PF)	-	1		
5	78106-YB4-000	IMPELLER	-	1		
6	78107-YB4-K10	CASE, VOLUTE	-	1		
7	78110-YB4-000	VALVE COMP., IN.	-	1		
8	78112-954-003	RING, CASING SEAL	-	1		
9	78114-YB4-000	PACKING, OUTLET	-	1		
10	78117-YB3-K10	CAP, FILLER	-	2		
11	78118-YB0-003	RING, SEAL (B)	-	2		
12	78118-YB4-004	O-RING, 71X5.7	-	1		
13	78122-YB3-000	SHIM, ADJUSTER	-	N		
14	78130-YB4-003	SEAL, MECHANICAL	-	1		
15	90043-YB4-000	BOLT, STUD, 6X50	-	3		
16	90281-YB4-000	NUT, CAP, 6MM	-	3		
17	90474-333-000	WASHER, SEALING, 8MM	-	4		
18	95701-08028-08	BOLT, FLANGE, 8X28	-	4		
19	95701-10032-08	BOLT, FLANGE, 10X32	-	12		

F-3

FRAME BED/HOSE COUPLING

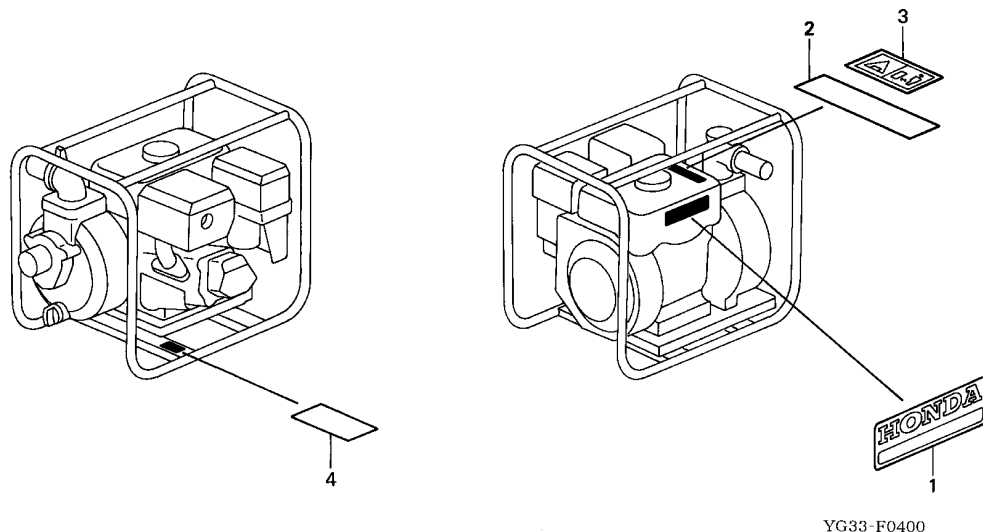
E 3



Service item	F.R.T.
RUBBER, ENGINE MOUNTING	0.1
FRAME COMP.	*0.3

3

Ref. No.	Part No.	Description	Reqd. QTY		Serial No.	Parts catalogue code
			WB 20 XT	WB 30 XT		
1	50310-YG3-000	FRAME COMP.	1	-		
	50310-YG4-000	-	1		
2	68311-YB3-K80	RUBBER, ENGINE MOUNTING	4	4	-----	DRX,DRXU
3	78139-YB3-000	BAND, HOSE	3	-		
	78139-YB4-000	-	3		
4	78311-954-010	COUPLING, HOSE	1	-		
	78311-YB4-010	-	1		
5	78312-YG3-000	RING, HOSE CLAMP	1	-		
	78312-YG4-000	-	1		
6	78313-YB3-000	PACKING, HOSE COUPLING	1	-		
	78313-YB4-010	PACKING, COUPLING	-	1		
7	78325-YG3-000	STRAINER COMP.	1	-		
8	78325-YG4-000	STRAINER COMP.	-	1		
9	94050-08080	NUT, FLANGE, 8MM	4	4	-----	DR,TR
		8	8	-----	DRX,DRXU
10	95701-08025-00	BOLT, FLANGE, 8X25	2	2	-----	DR,TR
11	95701-08035-08	BOLT, FLANGE, 8X35	2	2	-----	DR,TR



Service item F.R.T.
NOT INFORMATION

Ref. No.	Part No.	Description	Reqd. QTY		Serial No.	Parts catalogue code
			WB 20 XT	WB 30 XT		
1	78140-YG3-000	MARK(WB20XT)	1	-		
	78140-YG4-000	MARK(WB30XT)	-	1		
2	78141-YB3-K10	MARK, CAUTION (OIL & PUMP) (THAI)	1	1	-----	TR
	78141-YB3-610	MARK, CAUTION (PUMP)	1	1	-----	DR,DRXU
3	87539-ZA8-660	MARK, EX. CAUTION	1	1	-----	DRX
4	87616-YF3-760	LABEL, NOISE LEVEL (101)	1	-	-----	DRX
	87616-YB7-960	LABEL, NOISE LEVEL (106)	-	1	-----	DRX

PART NO. INDEX

F 2

Part Number	Address	Page	Ref.	Part Number	Address	Page	Ref.	Part Number	Address	Page	Ref.	Part Number	Address	Page	Ref.
87522-Z0T-810	D2	31	4					99000							
87528-733-E90	D2	31	5	91001-ZF1-003	C2	17	7								
87528-Z0T-800	D2	31	5	91001-ZF1-004	C2	15	13	99101-ZH8-0580	C12	25	23				
87528-ZE1-810	D2	31	5	91201-Z0T-801	C2	15	14	99101-ZH8-0600	C12	25	23				
87532-ZH8-810	D2	31	7					99101-ZH8-0620	C12	25	23				
87532-ZH8-W40	D2	31	6	91202-ZE6-013	C2	15	14	99101-ZH8-0680	C12	25	23				
87539-ZA8-660	E4	35	3	91203-ZE0-013	C4	17	8	99101-ZH8-0700	C12	25	23				
87594-ZB4-A00	D2	31	8	91351-YB3-003	E1	32	18	99204-ZE0-0350	C12	25	24				
87616-YB7-960	E4	35	4	91351-YB3-004	E1	32	18								
87616-YF3-760	E4	35	4	91353-671-004	C2	15	15								
					C15	28	8								
89000				93000											
89216-Z0T-800	D2	31	9												
89219-805-000	D2	31	10	93500-03006-1H	C11	24	21								
				93500-05025-0A	D1	30	16								
90000				93500-05025-0H	D1	30	16								
90001-ZE1-000	C6	19	6	94000											
90003-883-T20	C9	22	14												
90003-ZH8-003	C8	21	11	94001-08000-0S	C14	27	5								
90004-ZH7-003	C15	28	7	94050-06000	C13	26	9								
90008-ZE2-003	C8	21	12												
	C9	22	15												
90012-ZE0-010	C7	20	15	94050-08080	E3	34	9								
90013-883-000	C1	14	9	94050-10000	C2	15	16								
	C10	23	9	94101-06800	C2	15	17								
	D1	30	12	94251-08000	C3	16	18								
				94301-08140	C4	17	9								
90015-883-000	C4	17	6	94301-10160	C1	14	12								
90015-ZE5-010	D1	30	13	94305-20122	C12	25	22								
90022-888-010	C10	23	10												
	D1	30	14	95000											
90034-402-000	E1	32	14												
90043-YB4-000	E1	32	15	95001-45140-40	C15	28	10								
	E2	33	15	95002-02080	C15	28	11								
90043-ZE1-020	C1	14	10	95701-06008-00	C10	23	12								
90047-ZE1-000	C1	14	11	95701-06012-00	C3	16	19								
90050-ZE1-000	C14	27	4	95701-06020-00	C13	26	10								
90114-SA0-000	D1	30	15	95701-08025-00	E3	34	10								
90121-952-000	C16	29	9	95701-08025-08	E1	32	19								
90131-ZE1-000	C2	15	9	95701-08028-08	E1	32	20								
90201-Z0T-800	C16	29	10												
90206-ZE1-000	C7	20	16	95701-08032-00	C4	17	6								
90281-YB4-000	E1	32	16	95701-08035-08	E3	34	11								
	E2	33	16	95701-10032-08	E2	33	19								
90325-044-000	C13	26	8	95723-08055-00	C1	14	13								
90451-ZE1-000	C2	15	10	95723-08060-00	C1	14	13								
90474-333-000	E1	32	17												
	E2	33	17	96000											
90551-ZE0-000	C6	19	7												
90551-ZE1-000	C6	19	7	96100-62050-00	C4	17	7								
90601-ZE1-000	C2	15	11												
90601-ZH7-013	C10	23	11	98000											
90602-ZE1-000	C2	15	12												
				98079-56876	C1	14	14								
91000															
91001-878-003	C2	15	13												

4

PART NAME INDEX

G 1

Part name	Address	Page	Ref.	Part name	Address	Page	Ref.	Part name	Address	Page	Ref.
[A]				CARBURETOR ASSY.	C11	24	9	GRIP, STARTER.....	C9	22	11
ALERT UNIT, OIL	C10	23	6	CASE COMP., RECOIL STARTER	C8	21	2	GROMMET, ADJUSTING COVER.....	C10	23	1
ARM, GOVERNOR	D1	30	2	CASE COMP., STARTER	C9	22	2	GUIDE, EX. VALVE.....	C1	14	2
ARM, VALVE ROCKER	C7	20	4	CASE, VOLUTE	E1	32	6	GUIDE, IN. VALVE.....	C1	14	1
[B]				E2	33	6	GUIDE, RATCHET.....	C8	21	5	
				CASING	E1	32	1	[H]			
BAND, HOSE	E3	34	3	E2	33	1					
BARREL ASSY., CYLINDER	C2	15	1	CHAMBER SET, FLOAT	C11	24	4	HANDLE, BOX WRENCH.....	D2	31	10
BASE COMP., CONTROL	D1	30	10	CHOKE SET	C11	24	8	HEAD COMP., CYLINDER.....	C1	14	3
BEARING, RADIAL BALL	C2	15	13	CLIP, GOVERNOR HOLDER.....	C2	15	12	HOLDER, GOVERNOR WEIGHT.....	C2	15	5
BEARING, RADIAL BALL, 6205 ...	C4	17	7	CLIP, HARNESS	C10	23	11	[I]			
BEARING, RADIAL BALL, 62/22 ..	C2	15	13	CLIP, PISTON PIN, 13MM	C6	19	7				
	C4	17	7	CLIP, PISTON PIN, 18MM	C6	19	7	IMPELLER.....	E1	32	5
BOLT, CONNECTING ROD	C6	19	6	CLIP, TUBE	C15	28	11	E2	33	5	
BOLT, DRAIN PLUG	C2	15	9	CLIP, VALVE GUIDE	C1	14	4	INLET.....	E1	32	3
BOLT, FLANGE, 10X32	E2	33	19	COIL ASSY., IGNITION	C16	29	5	E2	33	3	
BOLT, FLANGE, 6X10	C8	21	12	COLLAR B, AIR CLEANER.....	C13	26	5	INSULATOR, CARBURETOR.....	C11	24	12
	C9	22	15	COLLAR, AIR CLEANER	C13	26	4	[J]			
BOLT, FLANGE, 6X12	C1	14	9	CONTROL ASSY.	D1	30	1				
	C3	16	19	CORD, STOP SWITCH	C16	29	8	JET SET, PILOT,.....	C12	25	24
	C10	23	9	COUPLING, HOSE	E3	34	4	JET, MAIN,.....	C12	25	23
	D1	30	12	COVER ASSY., CRANKCASE	C4	17	1	JOINT, FUEL TANK.....	C15	28	2
BOLT, FLANGE, 6X20	C10	23	10	COVER COMP., CYLINDER HEAD	C1	14	6	[K]			
	C13	26	10	COVER COMP., FAN	C10	23	2				
	D1	30	14	COVER COMP., HEAD	C1	14	6	KEY, SPECIAL WOODRUFF, 25X18..	C16	29	1
BOLT, FLANGE, 6X25	C16	29	9	COVER, AIR CLEANER	C13	26	3	[L]			
BOLT, FLANGE, 6X28	C4	17	6	COVER, CASING	E1	32	2				
BOLT, FLANGE, 6X29	C15	28	7	E2	33	2					
BOLT, FLANGE, 6X8	C10	23	12	COVER, STARTER REEL	C9	22	13	LABEL.....	D2	31	1
BOLT, FLANGE, 8X25	E1	32	19	CRANKSHAFT COMP.	C5	18	5	LABEL, CAUTION	D2	31	4
	E3	34	10		C6	19	5	LABEL, E-SPEC.....	D2	31	1
BOLT, FLANGE, 8X28	E1	32	20	[D]				LABEL, NOISE LEVEL	E4	35	4
	E2	33	18	DOWEL PIN, 10X16	C1	14	12	LEVER COMP., CHOKE	C11	24	16
BOLT, FLANGE, 8X32	C4	17	6	DOWEL PIN, 8X14	C4	17	9	LEVER, COCK.....	C11	24	17
BOLT, FLANGE, 8X35	E3	34	11	[E]				LEVER, CONTROL	D1	30	6
BOLT, FLANGE, 8X55	C1	14	13					LIFTER, VALVE.....	C7	20	5
BOLT, FLANGE, 8X60	C1	14	13	ELBOW COMP., AIR CLEANER	C13	26	6	[M]			
BOLT, GOVERNOR ARM	D1	30	13	ELEMENT, AIR CLEANER	C13	26	1				
BOLT, PIVOT, 8MM	C7	20	15	EMBLEM	D2	31	3	MARK.....	E4	35	1
BOLT, REEL COVER	C9	22	14	[F]				MARK, CAUTION.....	E4	35	2
BOLT, STUD, 6X112	C1	14	10	FAN, COOLING	C16	29	2	MARK, CHOKE.....	D2	31	5
BOLT, STUD, 6X50	E1	32	14	FILTER, FUEL	C15	28	6	MARK, EX. CAUTION.....	E4	35	3
	E2	33	15	FLOAT SET	C11	24	3	MARK, OIL ALERT.....	D2	31	7
BOLT, STUD, 8X32	C1	14	11	FLYWHEEL COMP.	C16	29	7	MARK, OIL CAUTION.....	D2	31	8
[C]				FRAME COMP.	E3	34	1	MARK, OPERATOR CAUTION.....	D2	31	2
CAMSHAFT ASSY.	C7	20	2	[G]				MARK, THROTTLE INDICATION.....	D2	31	6
CAP ASSY., NOISE SUPPRESSOR ..	C16	29	6	GASKET SET	C11	24	1	MUFFLER COMP.....	C14	27	1
CAP ASSY., OIL FILLER	C4	17	3	GASKET, CYLINDER HEAD	C1	14	5	[N]			
				GASKET, MUFFLER	C14	27	3				
CAP COMP., FUEL FILLER	C15	28	4	GOVERNOR ASSY.	C2	15	3	NOZZLE, MAIN.....	C11	24	11
CAP, CLEANER	C13	26	7	GRID, AIR CLEANER	C13	26	2	NUT, CAP, 6MM.....	E1	32	16
CAP, FILLER	E1	32	9	GRIP, STARTER	C8	21	9	NUT, FLANGE, 10MM.....	E2	33	16
	E2	33	10						C2	15	16

PART NAME INDEX

G 2

Part name	Address	Page	Ref.	Part name	Address	Page	Ref.	Part name	Address	Page	Ref.
NUT, FLANGE, 6MM	C13	26	9	[R]				SWITCH ASSY., ENGINE STOP.....	C10	23	7
	C15	28	9								8
	D1	30	17	RATCHET, STARTER	C8	21	4	SWITCH ASSY., OIL LEVEL.....	C2	15	2
NUT, FLANGE, 8MM	E3	34	9		C9	22	4				
NUT, HEX., 8MM	C14	27	5	REEL, RECOIL STARTER	C8	21	3	[T]			
NUT, PIVOT ADJUSTING	C7	20	16		C9	22	3	TANK COMP., FUEL.....	C15	28	3
NUT, SELF-LOCK, 6MM	D1	30	15	REEL, STARTER	C9	22	3	TUBE, BREATHER	C1	14	8
NUT, SPECIAL, 14MM	C16	29	10	RETAINER, EX. VALVE SPRING	C7	20	12	TUBE, FUEL, 4.5X140.....	C15	28	10
NUT, TOOL BOX SETTING	C13	26	8	RETAINER, IN. VALVE SPRING	C7	20	11				
				RING SET, PISTON	C5	18	1	[V]			
[O]				RING, CASING SEAL	E2	33	8	VALVE COMP., IN.....	E2	33	7
OIL SEAL, 22X35X6	C2	15	14	RING, HOSE CLAMP	E3	34	5	VALVE SET, FLOAT.....	C11	24	2
OIL SEAL, 22X41X6	C4	17	8	RING, SEAL	E1	32	10	VALVE, EX.....	C7	20	9
OIL SEAL, 25X41X6	C2	15	14		E2	33	11	VALVE, IN.....	C7	20	8
	C4	17	8	ROD ASSY., CONNECTING	C5	18	4		E1	32	7
O-RING, 14MM	C2	15	15	ROD, GOVERNOR	D1	30	3	[W]			
	C15	28	8	ROD, PUSH	C7	20	3	WASHER, CONTROL LEVER.....	D1	30	8
O-RING, 217.5X3.5	E1	32	18	ROPE, RECOIL STARTER	C8	21	10	WASHER, DRAIN PLUG, 10.2MM	C2	15	11
O-RING, 49X5.7	E1	32	11		C9	22	12	WASHER, PLAIN, 6MM	C2	15	17
O-RING, 71X5.7	E2	33	12	ROTATOR, VALVE	C7	20	13	WASHER, SEALING, 8MM	E1	32	17
OUTLET	E1	32	4	RUBBER, ENGINE MOUNTING	E3	34	2		E2	33	17
	E2	33	4	RUBBER, SUPPORTER	C15	28	1	WASHER, THRUST, 6MM	C2	15	10
								WEIGHT, GOVERNOR	C2	15	4
[P]				[S]				WRENCH, SPARK PLUG	D2	31	9
PACKING, CARBURETOR	C11	24	15	SCREW SET	C11	24	7				
PACKING, CASE COVER	C4	17	2	SCREW SET, DRAIN	C11	24	6				
PACKING, COUPLING	E3	34	6	SCREW SET, PILOT	C11	24	5				
PACKING, FUEL COCK	C11	24	20	SCREW, PAN, 3X6	C11	24	21				
PACKING, FUEL FILLER CAP	C15	28	5	SCREW, PAN, 5X25	D1	30	16				
PACKING, HEAD COVER	C1	14	7	SCREW, SETTING	C8	21	11				
PACKING, HOSE COUPLING	E3	34	6	SCREW, TAPPING, 5X8	C14	27	4				
PACKING, INSULATOR	C11	24	13	SCREW, THROTTLE STOP	C11	24	10				
PACKING, OIL FILLER CAP	C4	17	5	SEAL, MECHANICAL	E1	32	13				
PACKING, OUTLET	E1	32	8		E2	33	14				
	E2	33	9	SEAL, VALVE STEM	C7	20	1				
PIN, GOVERNOR WEIGHT	C2	15	6	SHAFT, GOVERNOR ARM	C2	15	8				
PIN, LOCK, 8MM	C3	16	18	SHAFT, RATCHET	C9	22	5				
PIN, PISTON	C5	18	3	SHIM, ADJUSTER	E1	32	12				
PIN, SPRING, 2X12	C12	25	22		E2	33	13				
PISTON	C5	18	2	SHROUD COMP.	C10	23	5				
PIVOT, ROCKER ARM	C7	20	6	SLIDER, GOVERNOR	C2	15	7				
PLATE	C9	22	6	SPACER COMP., CARBURETOR	C11	24	14				
PLATE A, FRICTION	C9	22	7	SPACER, CONTROL LEVER	D1	30	9				
PLATE B, FRICTION	C9	22	8	SPRING, COCK LEVER	C11	24	19				
PLATE COMP., SIDE	C10	23	3	SPRING, CONTROL ADJUSTING	D1	30	11				
				SPRING, FRICTION	C8	21	6				
PLATE, LEVER SETTING	C11	24	18		C9	22	9				
PLATE, PUSH ROD GUIDE	C7	20	14	SPRING, GOVERNOR	D1	30	4				
PLATE, SIDE	C10	23	3	SPRING, LEVER	D1	30	7				
				SPRING, RECOIL STARTER	C8	21	7				
PLUG, SPARK	C1	14	14	SPRING, RETURN	C8	21	8				
PROTECTOR, MUFFLER	C14	27	2	SPRING, STARTER RETURN	C9	22	10				
PULLEY, STARTER	C16	29	3	SPRING, THROTTLE RETURN	D1	30	5				
				SPRING, VALVE	C7	20	10				
				SPRING, WEIGHT RETURN	C7	20	7				
				STARTER ASSY., RECOIL	C8	21	1				
					C9	22	1				
				STRAINER COMP.	E3	34	7				
							8				



1

FOREWORD INDEX

2

ENGINE GROUP

3

FRAME GROUP

4

PART NUMBER INDEX

5

PART NAME INDEX

HONDA
The Power of Dreams



PARTS CATALOGUE NEWS

Honda Motor Co., Ltd. Service Division

PARTS CATALOGUE - CORRECTED

Printed in Japan

February 10, 2003

CODE NO.	BOOKLET TYPE	13YG30E1
	MICRO- FICHE	13YG30EA
PARTS CATALOGUE NEWS	WB20XT WB30XT	
NEWS NO.	001	

Block No.	Ref. No.	Note	Part No.	Description	Reqd. QTY		Serial No.	Parts catalogue code
					WB 20 XT	WB 30 XT		
E-28	1	D	87135-ZE2-020	LABEL (E-SPEC)	1	1	-----	DR, TR

NOTE A:PART NO.CHANGE D:NEWLY PROVIDED E:PART NO.DELETION K:REQUIRED NO.CORRECTION L:APPLICATION SERIAL NO.CORRECTION
T:APPLICATION CORRECTION Z:REMARKS CHANGE



PARTS CATALOGUE NEWS

Honda Motor Co., Ltd. Service Division

PARTS CATALOGUE - CORRECTED

Printed in Japan

CODE NO.	BOOKLET TYPE	13YG30E1
	MICRO-FICHE	13YG30EA/FA/GA
PARTS CATALOGUE NEWS	WB20XT WB30XT	
NEWS NO.	002	

Block No.	Ref. No.	Note	Part No.	Description	Reqd. QTY		Serial No.	Parts catalogue code
					WB 20 XT	WB 30 XT		
E-2	3	E	12210-ZH7-000	*PARTS NO. DELETION				
		D	12210-ZH7-405	HEAD COMP., CYLINDER	1	-		
E-17	6	K	17672-ZE2-W01	FILTER, FUEL	1	1	-----	DR, TR
					(1)	(1)	-----	DRX, DRXU

NOTE A:PART NO.CHANGE D:NEWLY PROVIDED E:PART NO.DELETION K:REQUIRED NO.CORRECTION L:APPLICATION SERIAL NO.CORRECTION T:APPLICATION CORRECTION Z:REMARKS CHANGE



PARTS CATALOGUE NEWS

Honda Motor Co., Ltd. Service Division

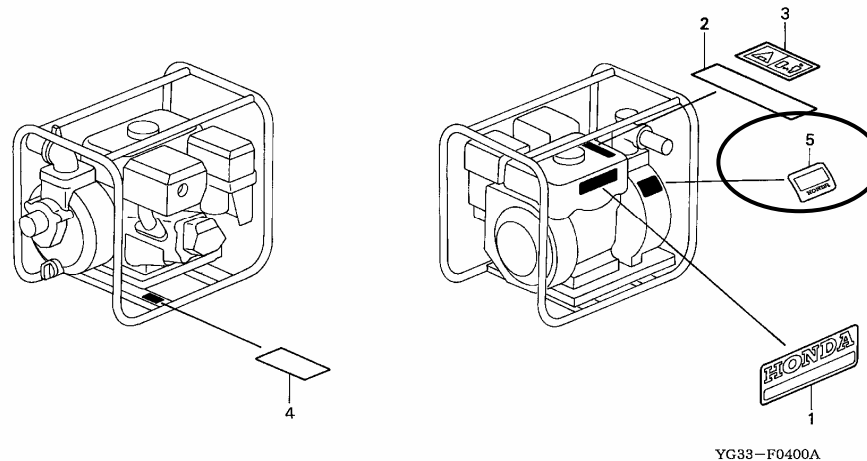
PARTS CATALOGUE - CORRECTED

Printed in Japan

CODE NO.	BOOKLET TYPE	13YG30E1
	MICRO-FICHE	13YG30EA/FA/GA
PARTS CATALOGUE NEWS		WB20XT WB30XT
NEWS NO.		003

Block No.	Ref. No.	Note	Part No.	Description	Reqd. QTY		Serial No.	Parts catalogue code
					WB 20 XT	WB 30 XT		

F-4 LABEL



YG33-F0400A

F-4	5	D	87152-YG3-000	LABEL, SPECIFICATION	1	-
-----	---	---	---------------	----------------------------	---	---

NOTE A:PART NO.CHANGE D:NEWLY PROVIDED E:PART NO.DELETION K:REQUIRED NO.CORRECTION L:APPLICATION SERIAL NO.CORRECTION
T:APPLICATION CORRECTION Z:REMARKS CHANGE

PARTS CATALOGUE NEWS

BOOKNo.:13YG30E1

Block No.	Ref. No.	Note	Part No.	Description	Reqd. QTY		Serial No.	Parts catalogue code
					WB 20 XT	WB 30 XT		
		D	87152-YG4-000	-	1		

NOTE A:PART NO.CHANGE D:NEWLY PROVIDED E:PART NO.DELETION K:REQUIRED NO.CORRECTION L:APPLICATION SERIAL NO.CORRECTION
T:APPLICATION CORRECTION Z:REMARKS CHANGE



PARTS CATALOGUE NEWS

Honda Motor Co., Ltd. Service Division

PARTS CATALOGUE - CORRECTED

Printed in Japan

CODE NO.	BOOKLET TYPE	13YG30E1
	MICRO- FICHE	13YG30EA/FA/GA
PARTS CATALOGUE NEWS	WB20XT WB30XT	
NEWS NO.	004	

Block No.	Ref. No.	Note	Part No.	Description	Reqd. QTY		Serial No.	Parts catalogue code
					WB 20 XT	WB 30 XT		
E-11	1	L	28400-ZH8-013YA	STARTER ASSY., RECOIL *R280*.....POWER RED	1	-	----- 1154036	DRX, DRXU
					-	1	----- 1411006	DRX, DRXU
	2	L	28410-ZH8-003YA	CASE COMP., RECOIL STARTER *R280*.....POWER RED	1	-	----- 1154036	DRX, DRXU
					-	1	----- 1411005	DRX, DRXU
	3	L	28420-ZH8-013	REEL, RECOIL STARTER (NATURAL)	1	-	----- 1154036	DRX, DRXU
					-	1	----- 1411005	DRX, DRXU
	4	L	28422-ZH8-013	RATCHET, STARTER	2	-	----- 1154036	DRX, DRXU
					-	2	----- 1411005	DRX, DRXU
	5	L	28433-ZH8-003	GUIDE, RATCHET	1	-	----- 1154036	DRX, DRXU
					-	1	----- 1411005	DRX, DRXU
	6	L	28441-ZH8-003	SPRING, FRICTION	1	-	----- 1154036	DRX, DRXU
					-	1	----- 1411005	DRX, DRXU

NOTE A:PART NO.CHANGE D:NEWLY PROVIDED E:PART NO.DELETION K:REQUIRED NO.CORRECTION L:APPLICATION SERIAL NO.CORRECTION
T:APPLICATION CORRECTION Z:REMARKS CHANGE

PARTS CATALOGUE NEWS

BOOKNo.:13YG30E1

Block No.	Ref. No.	Note	Part No.	Description	Reqd. QTY		Serial No.	Parts catalogue code
					WB 20 XT	WB 30 XT		
	7	L	28442-ZH8-003	SPRING, RECOIL STARTER	1	-	----- 1154036	DRX, DRXU
					-	1	----- 1411005	DRX, DRXU
	8	L	28443-ZH8-003	SPRING, RETURN	2	-	----- 1154036	DRX, DRXU
					-	2	----- 1411005	DRX, DRXU
	9	L	28461-ZH8-003	GRIP, STARTER	1	-	----- 1154036	DRX, DRXU
					-	1	----- 1411005	DRX, DRXU
	10	L	28462-ZH8-003	ROPE, RECOIL STARTER	1	-	----- 1154036	DRX, DRXU
					-	1	----- 1411005	DRX, DRXU
	11	L	90003-ZH8-003	SCREW, SETTING	1	-	----- 1154036	DRX, DRXU
					-	1	----- 1411005	DRX, DRXU
	12	L	90008-ZE2-003	BOLT, FLANGE, 6X10	3	-	----- 1154036	DRX, DRXU
					-	3	----- 1411005	DRX, DRXU
E-11-1	1	L	28400-Z0T-800ZB	STARTER ASSY., RECOIL *R280*.....POWER RED	1	-	----- 1154036	DR, TR
					-	1	----- 1411005	DR, TR
	2	L	28410-Z0T-800ZB	CASE COMP., STARTER *R280*.....POWER RED	1	-	----- 1154036	DR, TR
					-	1	----- 1411005	DR, TR
	3	L	28421-883-T20	REEL, STARTER	1	-	----- 1154036	DR, TR
					-	1	----- 1411005	DR, TR
	4	L	28422-883-T20	RATCHET, STARTER	1	-	----- 1154036	DR, TR
					-	1	----- 1411005	DR, TR
	5	L	28423-883-T20	SHAFT, RATCHET	1	-	----- 1154036	DR, TR
					-	1	----- 1411005	DR, TR
	6	L	28429-883-T20	PLATE	1	-	----- 1154036	DR, TR

NOTE A:PART NO.CHANGE D:NEWLY PROVIDED E:PART NO.DELETION K:REQUIRED NO.CORRECTION L:APPLICATION SERIAL NO.CORRECTION
T:APPLICATION CORRECTION Z:REMARKS CHANGE

PARTS CATALOGUE NEWS

BOOKNo.:13YG30E1

Block No.	Ref. No.	Note	Part No.	Description	Reqd. QTY		Serial No.	Parts catalogue code
					WB 20 XT	WB 30 XT		
					-	1	----- 1411005	DR, TR
	7	L	28431-883-T20	PLATE A, FRICTION	1	-	----- 1154036	DR, TR
					-	1	----- 1411005	DR, TR
	8	L	28432-883-T20	PLATE B, FRICTION	1	-	----- 1154036	DR, TR
					-	1	----- 1411005	DR, TR
	9	L	28441-883-T20	SPRING, FRICTION	1	-	----- 1154036	DR, TR
					-	1	----- 1411005	DR, TR
	10	L	28442-Z0T-800	SPRING, STARTER RETURN	1	-	----- 1154036	DR, TR
					-	1	----- 1411005	DR, TR
	11	L	28461-Z0T-800	GRIP, STARTER	1	-	----- 1154036	DR, TR
					-	1	----- 1411005	DR, TR
	12	L	28462-883-T20	ROPE, RECOIL STARTER	1	-	----- 1154036	DR, TR
					-	1	----- 1411005	DR, TR
	13	L	28474-Z0T-800	COVER, STARTER REEL	1	-	----- 1154036	DR, TR
					-	1	----- 1411005	DR, TR
	14	L	90003-883-T20	BOLT, REEL COVER	1	-	----- 1154036	DR, TR
					-	1	----- 1411005	DR, TR
	15	L	90008-ZE2-003	BOLT, FLANGE, 6X10	3	-	----- 1154036	DR, TR
					-	3	----- 1411005	DR, TR

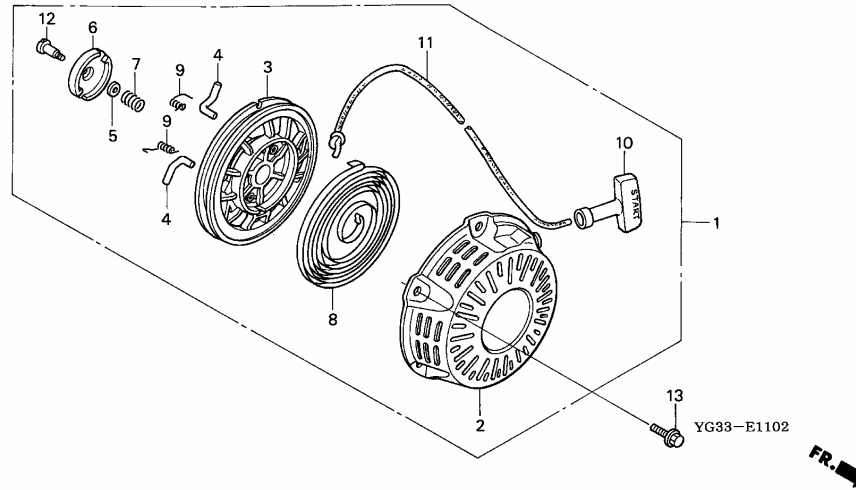
NOTE A:PART NO.CHANGE D:NEWLY PROVIDED E:PART NO.DELETION K:REQUIRED NO.CORRECTION L:APPLICATION SERIAL NO.CORRECTION
T:APPLICATION CORRECTION Z:REMARKS CHANGE

BOOKNo.:13YG30E1

Block No.	Ref. No.	Note	Part No.	Description	Reqd. QTY		Serial No.	Parts catalogue code
					WB 20 XT	WB 30 XT		

E-11-2 RECOIL STARTER (3)

Service	Item	F.R.T.
	STARTER ASSY., RECOIL.....	0.1
	RATCHET, STARTER.....	0.2
	REEL, RECOIL STARTER.....	0.3
	.ROPE, RECOIL STARTER	
	.SPRING, RECOIL STARTER	



E-11-2	1	D	28400-ZH8-023YA	STARTER ASSY., RECOIL *R280*.....POWER RED	1	-	1154037
					-	1	1411006
	2	D	28410-ZH8-003YA	CASE COMP., RECOIL STARTER *R280*.....POWER RED	1	-	1154037
					-	1	1411006
	3	D	28421-ZH8-801	REEL, RECOIL STARTER	1	-	1154037
					-	1	1411006
	4	D	28422-ZH8-801	RATCHET, STARTER	2	-	1154037
					-	2	1411006
	5	D	28431-ZH8-801	PLATE, FRICTION	1	-	1154037
					-	1	1411006
	6	D	28433-ZH8-801	GUIDE, RATCHET	1	-	1154037

NOTE A:PART NO.CHANGE D:NEWLY PROVIDED E:PART NO.DELETION K:REQUIRED NO.CORRECTION L:APPLICATION SERIAL NO.CORRECTION
T:APPLICATION CORRECTION Z:REMARKS CHANGE

PARTS CATALOGUE NEWS

BOOKNo.:13YG30E1

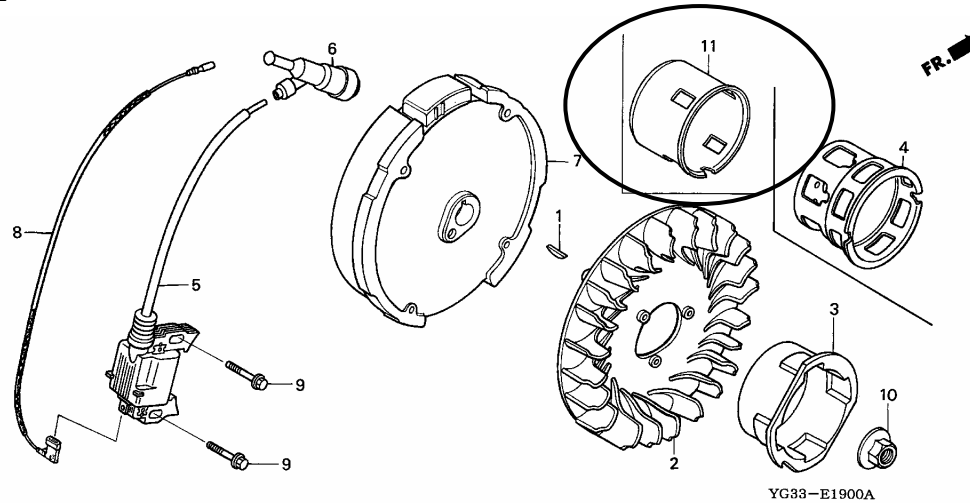
Block No.	Ref. No.	Note	Part No.	Description	Reqd. QTY		Serial No.	Parts catalogue code
					WB 20 XT	WB 30 XT		
					-	1	1411006	
	7	D	28441-ZH8-801	SPRING, FRICTION	1	-	1154037	
					-	1	1411006	
	8	D	28442-ZH8-003	SPRING, RECOIL STARTER	1	-	1154037	
					-	1	1411006	
	9	D	28443-ZH8-801	SPRING, RETURN	2	-	1154037	
					-	2	1411006	
	10	D	28461-ZH8-003	GRIP, STARTER	1	-	1154037	
					-	1	1411006	
	11	D	28462-ZH8-003	ROPE, RECOIL STARTER	1	-	1154037	
					-	1	1411006	
	12	D	90003-ZH8-003	SCREW, SETTING	1	-	1154037	
					-	1	1411006	
	13	D	90008-ZE2-003	BOLT, FLANGE, 6X10	3	-	1154037	
					-	3	1411006	

NOTE A:PART NO.CHANGE D:NEWLY PROVIDED E:PART NO.DELETION K:REQUIRED NO.CORRECTION L:APPLICATION SERIAL NO.CORRECTION
T:APPLICATION CORRECTION Z:REMARKS CHANGE

BOOKNo.:13YG30E1

Block No.	Ref. No.	Note	Part No.	Description	Reqd. QTY		Serial No.	Parts catalogue code
					WB 20 XT	WB 30 XT		

E-19 FLYWHEEL/IGNITION COIL



E-19	3	L	28451-ZH7-003	PULLEY, STARTER	1	-	-----	1154036	DRX, DRXU
		L	28451-ZH8-003	-	1	-----	1411005	DRX, DRXU
	4	L	28451-Z0S-800	PULLEY, STARTER	1	-	-----	1154036	DR, TR
		L	28451-Z0T-800	-	1	-----	1411005	DR, TR
	11	D	28451-ZH7-801	PULLEY, STARTER	1	-		1154037	
		D	28451-ZH8-801	-	1		1411006	

NOTE A:PART NO.CHANGE D:NEWLY PROVIDED E:PART NO.DELETION K:REQUIRED NO.CORRECTION L:APPLICATION SERIAL NO.CORRECTION
T:APPLICATION CORRECTION Z:REMARKS CHANGE



PARTS CATALOGUE NEWS

Honda Motor Co., Ltd. Service Division

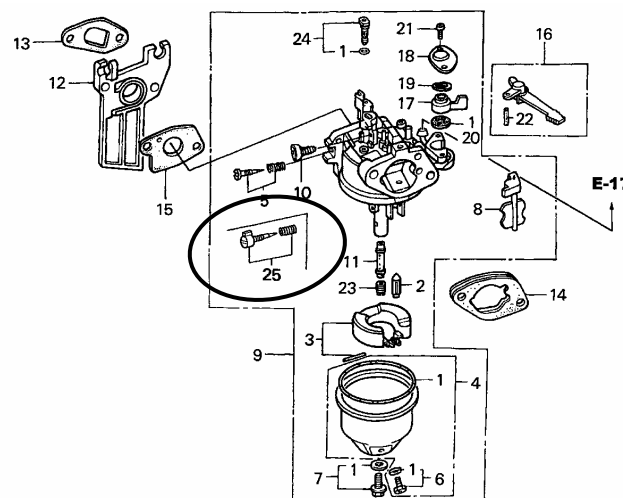
PARTS CATALOGUE - CORRECTED

Printed in Japan

CODE NO.	BOOKLET TYPE	13YG30E1
	MICRO-FICHE	13YG30EA/FA/GA
PARTS CATALOGUE NEWS		WB20XT WB30XT
NEWS NO.		005

Block No.	Ref. No.	Note	Part No.	Description	Reqd. QTY		Serial No.	Parts catalogue code
					WB 20 XT	WB 30 XT		

E-14 CARBURETOR



YG33-E1400A

E-14	5	L	16016-ZE0-005	SCREW SET, PILOT	1	1	-----	DR, DRXU, TR
------	---	---	---------------	------------------------	---	---	-------	--------------

NOTE A:PART NO. CHANGE D:NEWLY PROVIDED E:PART NO. DELETION K:REQUIRED NO. CORRECTION L:APPLICATION SERIAL NO. CORRECTION
T:APPLICATION CORRECTION Z:REMARKS CHANGE

PARTS CATALOGUE NEWS

BOOKNo. : 13YG30E1

Block No.	Ref. No.	Note	Part No.	Description	Reqd. QTY		Serial No.	Parts catalogue code
					WB 20 XT	WB 30 XT		
				(CARBURETOR NO.)	1	-	----- BE61J A	DRX
				(CARBURETOR NO.)	-	1	----- BE66G A	DRX
	25	D	16016-ZH7-W01	SCREW SET, PILOT (CARBURETOR NO.)	1	-	BE61K A -----	DRX
				(CARBURETOR NO.)	-	1	BE66H A -----	DRX
E-28	1	T	87135-ZE2-020	LABEL, E-SPEC (15.5X27.5)	1	1		

NOTE A:PART NO. CHANGE D:NEWLY PROVIDED E:PART NO. DELETION K:REQUIRED NO. CORRECTION L:APPLICATION SERIAL NO. CORRECTION
T:APPLICATION CORRECTION Z:REMARKS CHANGE